

KENTUCKY DEPARTMENT OF HIGHWAYS

KY 53 OVERPASS

SHELBY COUNTY

LOUISVILLE - LEXINGTON - CATLETTSBURG

GENERAL NOTE

SPECIFICATIONS: KENTUCKY DEPARTMENT OF HIGHWAYS, 1955 STANDARD WITH AMENDMENTS.

DESIGN LOAD: BRIDGE DESIGNED FOR H20-S16-44 LOADING AS SPECIFIED IN A.A.S.H.O. 1957 SPECIFICATIONS WITH ALTERNATE MILITARY LOADING.

CONCRETE: CLASS "A" CONCRETE TO BE USED THROUGHOUT. THE CONTRACTOR SHALL FURNISH SUFFICIENT CONCRETE TO POUR BETWEEN THE CONSTRUCTION JOINTS AS SHOWN ON THE PLANS IN ONE CONTINUOUS POUR.

REINFORCEMENT: DIMENSIONS FROM FACE OF CONCRETE TO BARS ARE CLEAR DISTANCES UNLESS OTHERWISE SHOWN. DIMENSIONS FOR BAR SPACINGS ARE DISTANCES CENTER TO CENTER OF BARS.

FALSEWORK: THE FALSEWORK SUPPORTING BEAMS AND SLABS OF ANY SPAN OF A CONTINUOUS UNIT SHALL NOT BE REMOVED UNTIL ALL BEAMS AND SLABS IN ALL SPANS OF THAT UNIT HAVE BEEN POURED FOR AT LEAST TWENTY-ONE (21) DAYS.

EXPANSION JOINT MATERIAL, COPPER STRIP AND TAR PAPER: THE COST OF THESE ITEMS IS TO BE INCLUDED IN THE UNIT PRICE BID FOR CLASS "A" CONCRETE.

SLOPE PROTECTION: FOR 4" CONCRETE SLOPE WALL. SEE STANDARD DRAWING 10.05.

BEVELED EDGES: ALL EXPOSED EDGES SHALL BE BEVELED 7/8" UNLESS OTHERWISE NOTED.

TAR PAPER: TO BE COMMERCIAL GRADE TAR PAPER OR ROOFING FELT APPROXIMATELY 1/16" THICK.

STRUCTURAL STEEL: THE LUMP SUM BID FOR STRUCTURAL STEEL INCLUDES ALL STRUCTURAL STEEL, BOLTS, NUTS, PINS, ROLLERS, LEAD PLATES AND PIG LEAD FOR ANCHOR BOLT PACING.

REFERENCE & ESTIMATE OF QUANTITIES

ITEM	SHEET NO.	CONCRETE REINFORCEMENT		STRUCTURE COMMON	EXCAV. S.R.	ALUMINUM HANDRAIL LIN. FT.	4" CONGR. SLOPE WALL SQ. YDS.	APPROX. WT. STRUCT. STEEL LBS.	NO. 4 STONE TONS	SPECIAL FILL TONS	CORR. METAL PIPE LIN. FT.	PERF. CORR. METAL PIPE LIN. FT.
		CLASS	REINFORCEMENT									
		CU. YDS.	LBS.	CU. YDS.	CU. YDS.	CU. YDS.	CU. YDS.	LBS.	TONS	TONS	TONS	TONS
TITLE SHEET & QUANTITIES	1											
LAYOUT	2											
ABUTMENT 1	3	131.6	15,629	175	50		375			4300	20	51
PIER 1	4	50.0	11,683	40	30				1.6			
PIER 2	5	48.6	11,461		40				42.8			
PIER 3	6	53.0	12,977		35				1.6			
ABUTMENT 2	7	102.8	12,327	140	35		315			1350	18	34
SUBSTRUCTURE BILL OF REINF.	8											
SOUNDINGS	9											
ELEVATIONS	10											
ANCHOR BOLT PLAN	11											
RCDG CONTINUOUS UNIT	42CG1	867.7	23,547			542.5						
HANDRAIL	H110											
SPECIAL FILL	SF1		0.4									
SLOPE PROTECTION	10.05											
SHOES & ROCKERS	SS1											
EXPANSION DAM	ED1											
TOTAL		1254.3	300,720	355	190	542.5	675	25,190	46.0	5650	38	85

BILL OF INCIDENTAL MATERIALS

ITEM	NO. REQD.	SIZE	LOCATION
Premolded Exp. Jt. Mat.	1	1' x 11' x 41" B	Between Endwall and Abut. 2 Parapet
" " "	2	1' x 11 1/2' x 3' 9 1/2"	" " "
" " "	2	1/2' x 1' x 6' 0 1/2"	Keys at Abutments 1 & 2
Copper Strip	1	1/2" wide 46' long	Between Endwall and Parapet of Abut. 2 See Std. Dwg. G-351 for details.

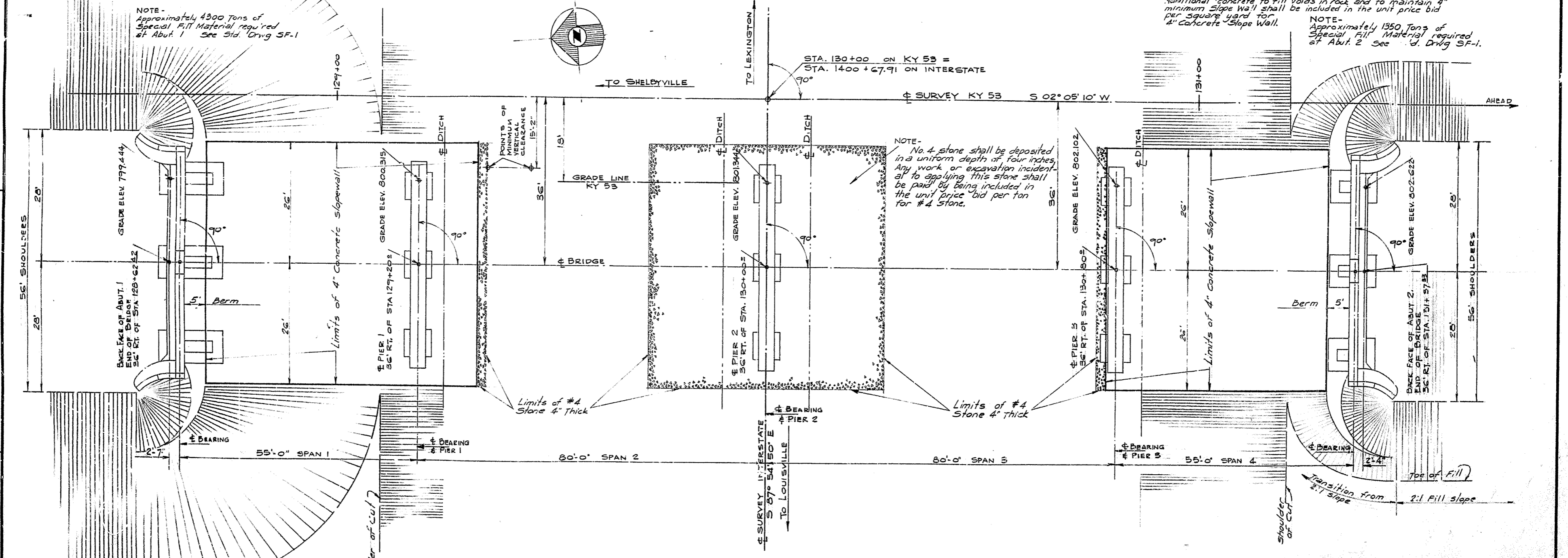
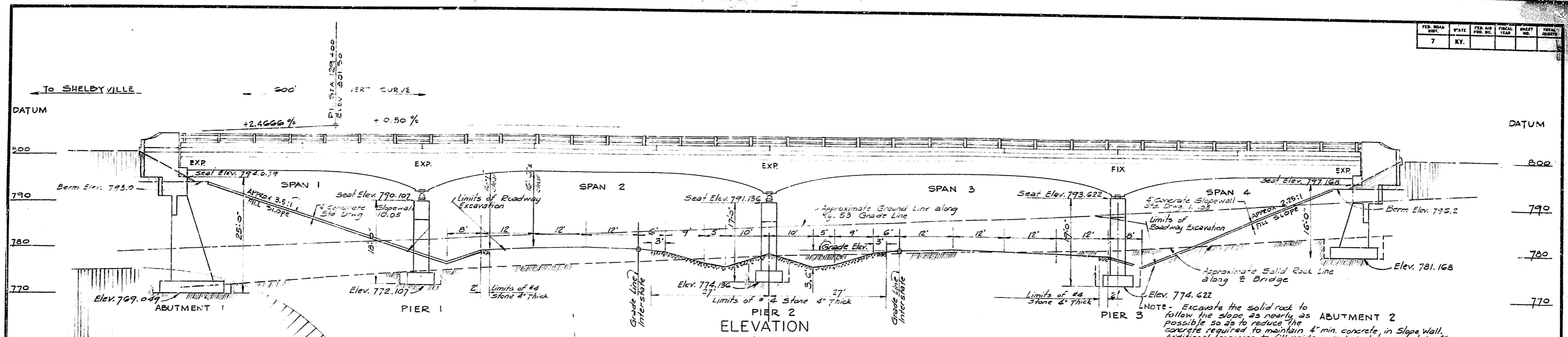
42 CG1 (3 SHEETS)
H110
SF1
10.05
SS1
ED1
G-351

KY 53 OVER INTERSTATE SHEET 1 OF 11

COMMONWEALTH OF KENTUCKY
DEPARTMENT OF HIGHWAYS
FRANKFORT
COUNTY OF
SHELBY
LOUISVILLE - LEXINGTON - CATLETTSBURG

NO. KY-53
THE KENTUCKY DEPARTMENT OF HIGHWAYS

FED. ROAD DIST.	STATE	FED. AID PROJ. NO.	FISCAL YEAR	SHEET NO.	TOTAL SHEETS
7	KY.				



55', 80', 80', 55' CONTINUOUS R.C.D.G. SPANS 0° SKEW
 H20-SIG-44 LOADING WITH MILITARY ALTERNATE
 42' ROADWAY 2-2'6" SIDEWALKS 5'6" SHOULDERS @ BRIDGE
 2:1 FILL SLOPES WITH TRANSITION

LAYOUT

KY 53 OVER INTERSTATE SHEET 2

COMMONWEALTH OF KENTUCKY
 DEPARTMENT OF HIGHWAYS
 FRANKFORT
 COUNTY OF
 SHELBY
 LOUISVILLE-LEXINGTON-CATLETTSBURG

190+00 KY 53 ROAD
 STATION 1400+67.91 INTERSTATE PROJECT NO.

BRIDGE NUMBER 106-126-H65

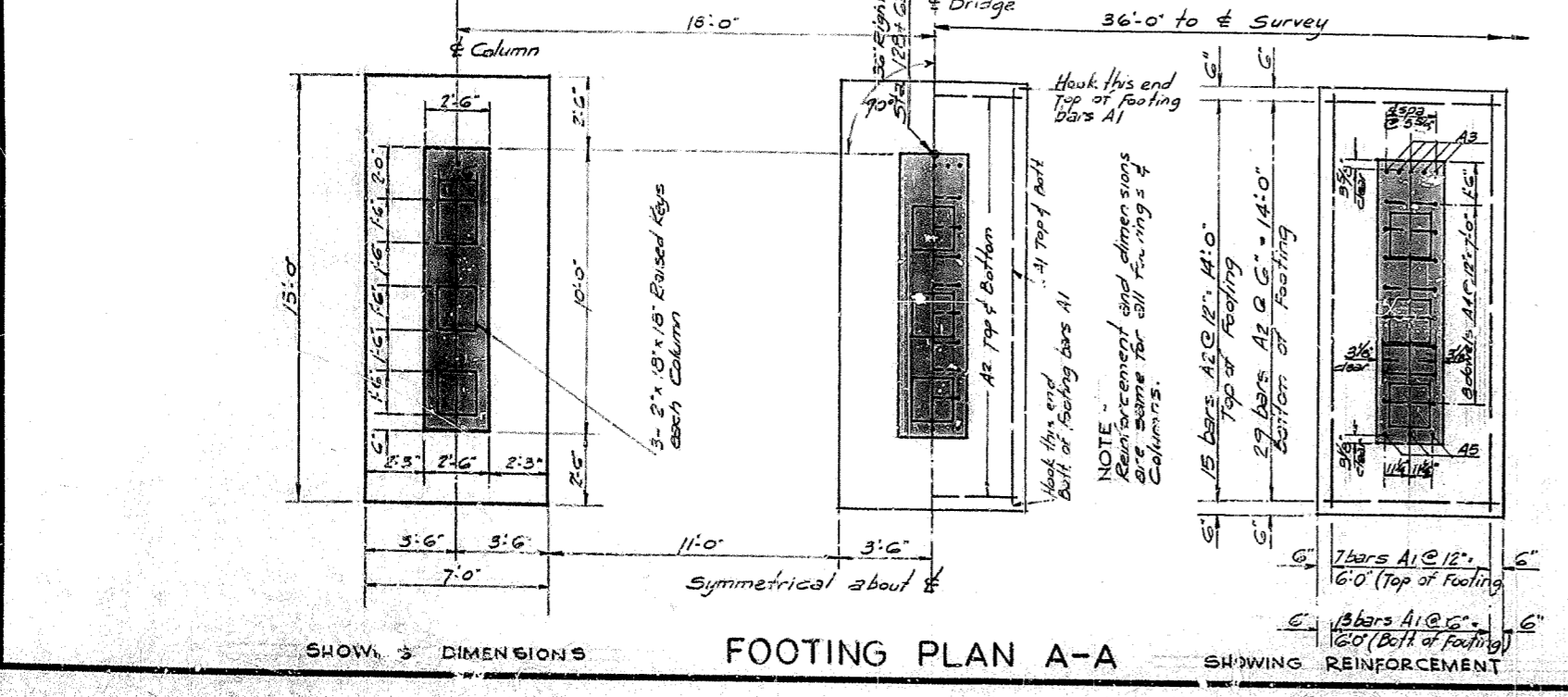
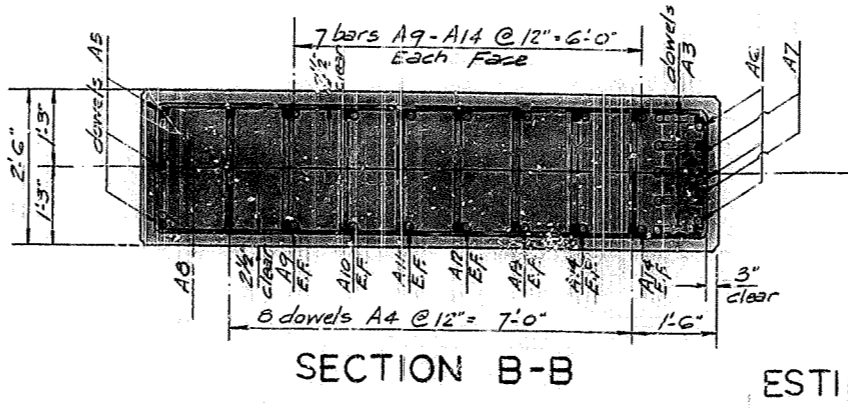
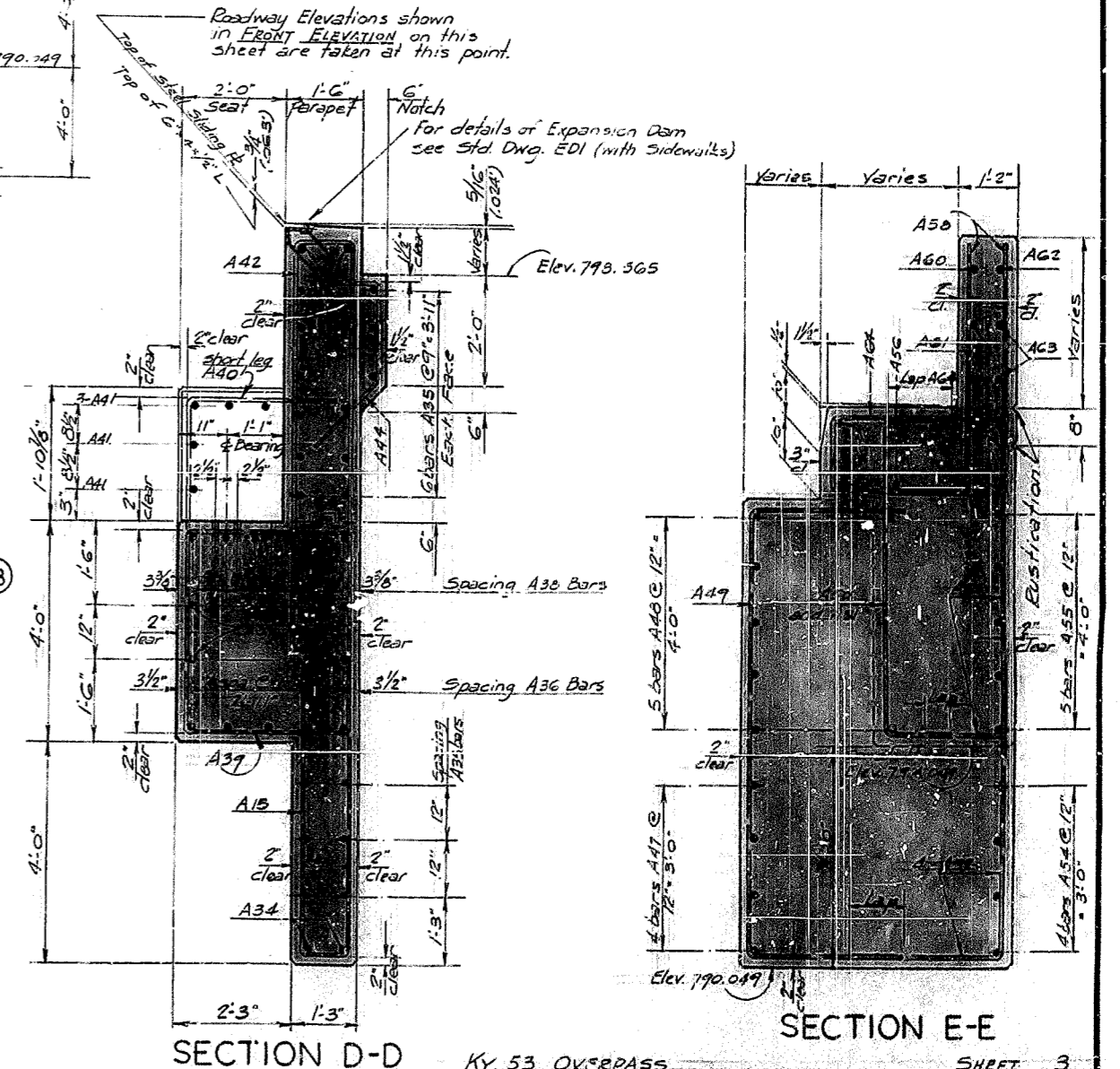
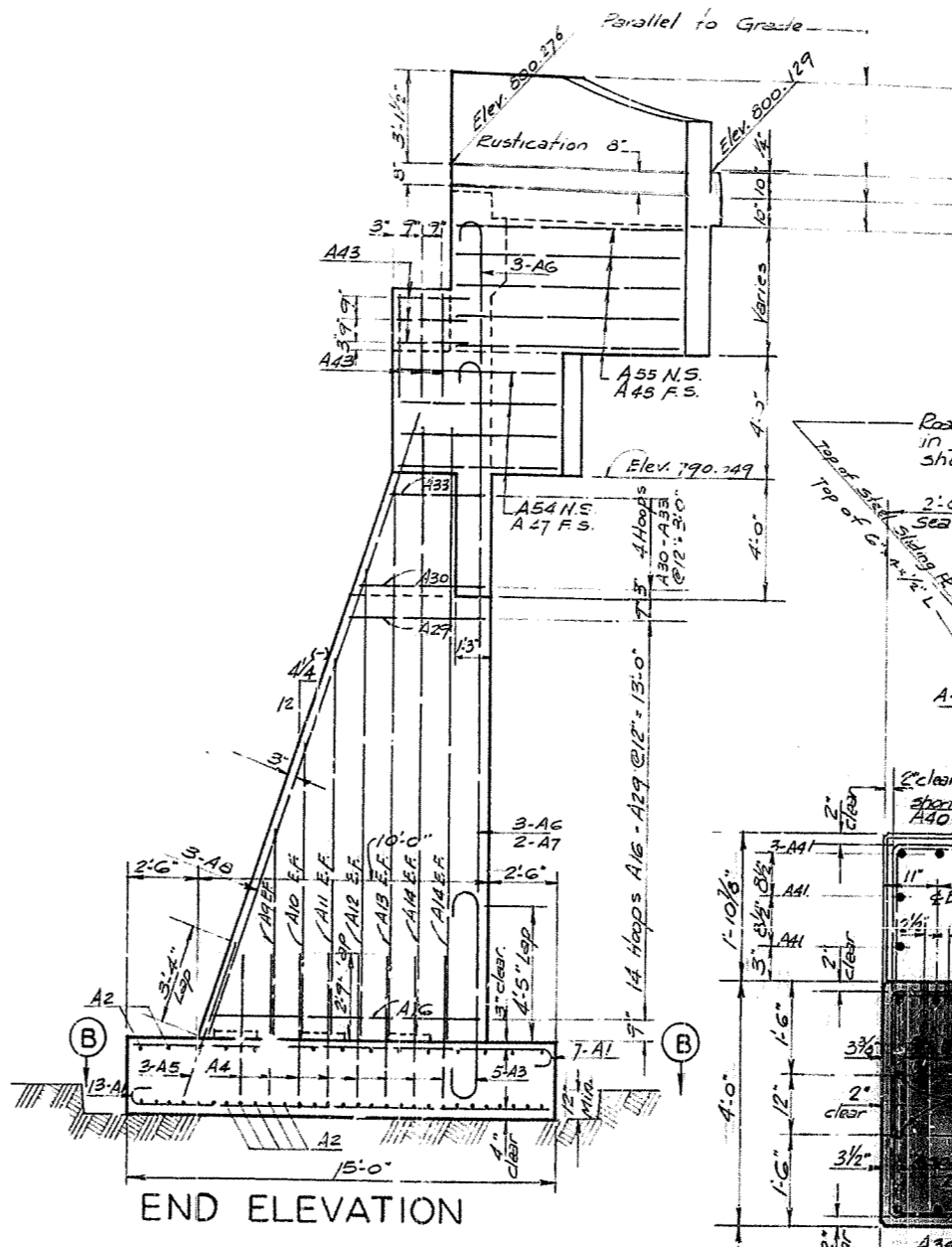
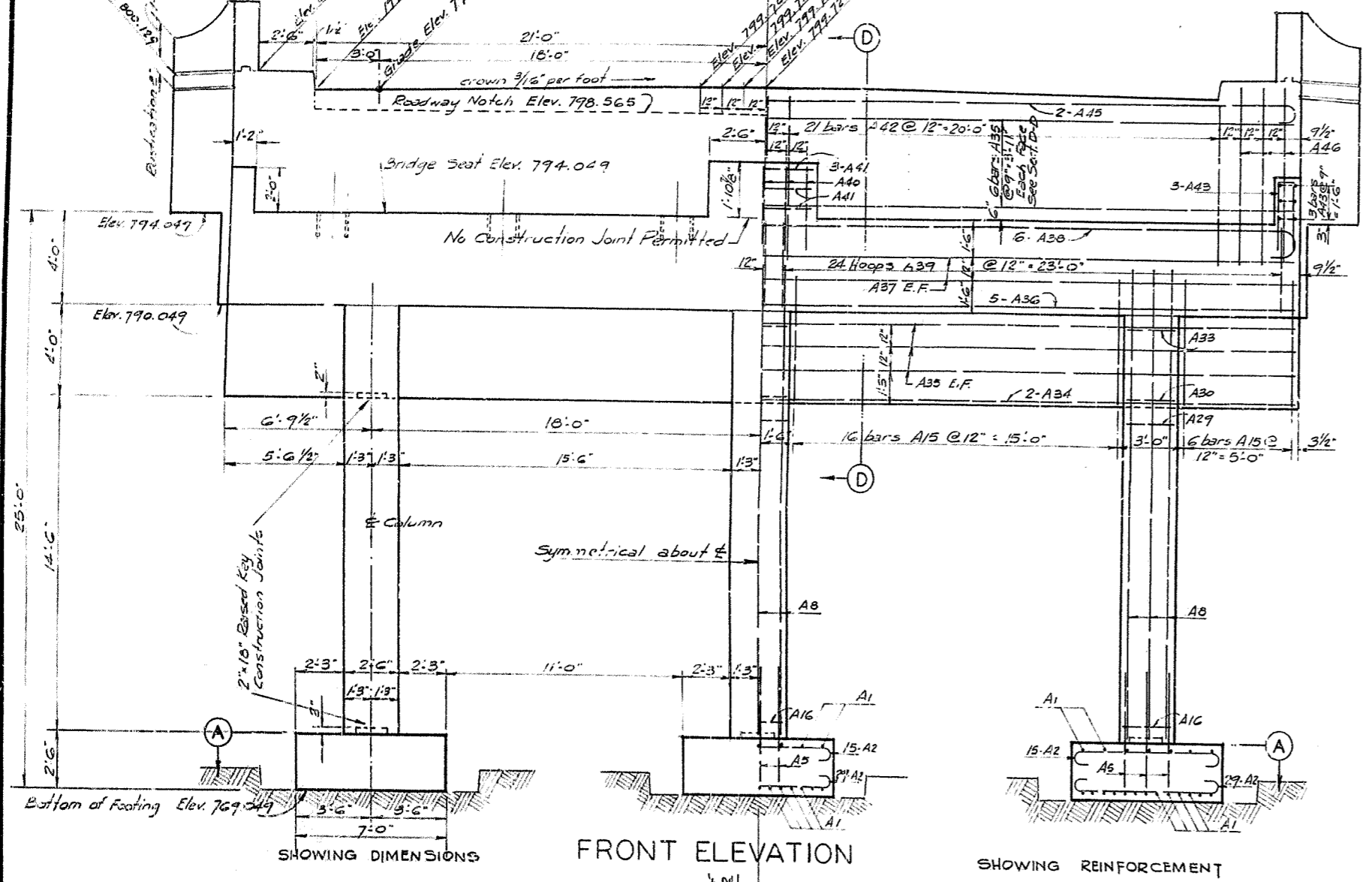
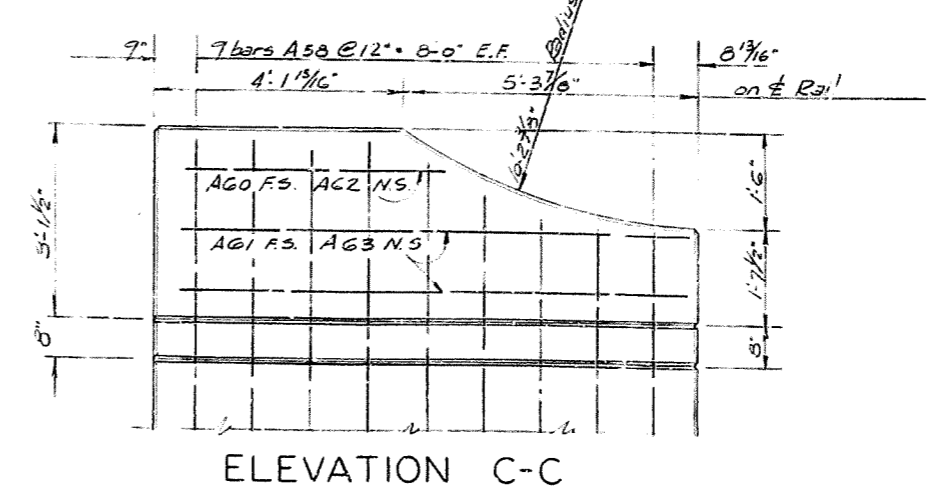
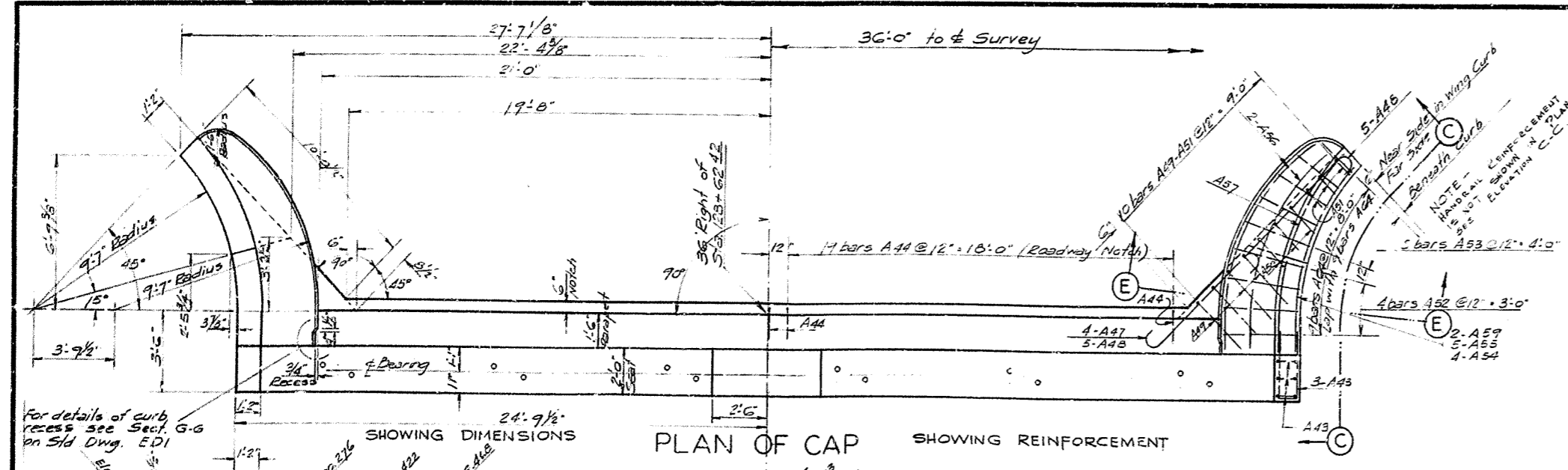
DRAWING NO. 13756

REVISIONS:

NO.	DATE	DESCRIPTION
1	11-5-58	AS SHOWN

DESIGNED BY: [Signature] CHECKED BY: [Signature]

FED. ROAD DIST.	STATE	FED. AID PROJ. NO.	FISCAL YEAR	SHEET NO.	TOTAL SHEETS
7	KY.				



ESTIMATE OF QUANTITIES

CONCRETE, CLASS 'A'	131.6 CU. YDS
REINFORCEMENT	15,029 LBS.

DETAILS OF ABUTMENT I
WORK THIS SHEET WITH SHEET 8

KY. 53 OVERPASS SHEET 3

COMMONWEALTH OF KENTUCKY
DEPARTMENT OF HIGHWAYS
FRANKFORT
COUNTY OF
SHELBY
LOUISVILLE-LEXINGTON-CATLETTSBURG

130600. ON KY. 55. ROAD
STATION 1400+67.11 ON INTERSTATE PROJECT NO.

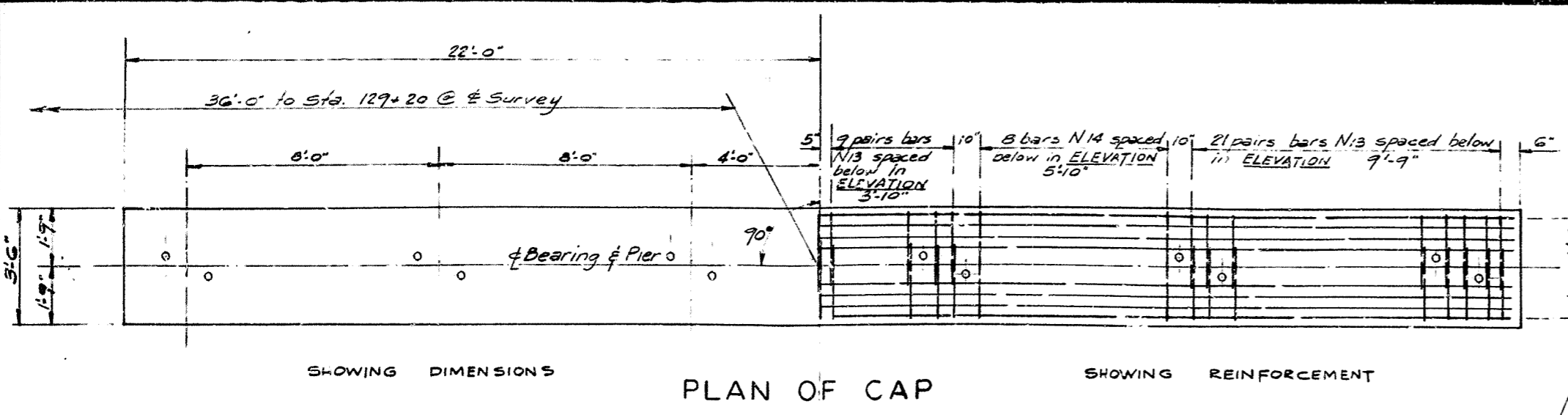
BRIDGE NUMBER 13756 DRAWING NO. 13756

REVISIONS:

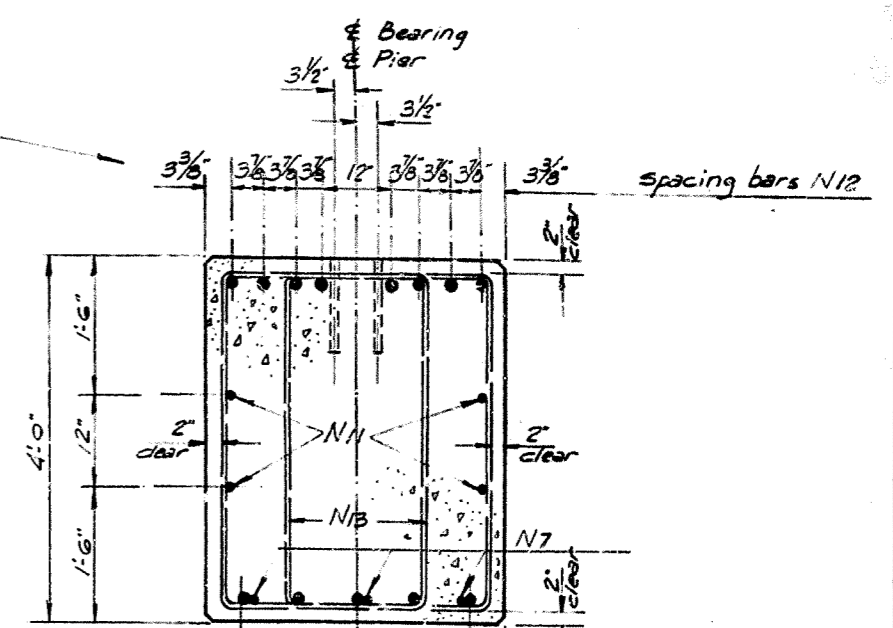
NO.	DATE	BY	DESCRIPTION
1	10-25-58
2	11-27-58

APPROVED BY: G. A. DeBorja

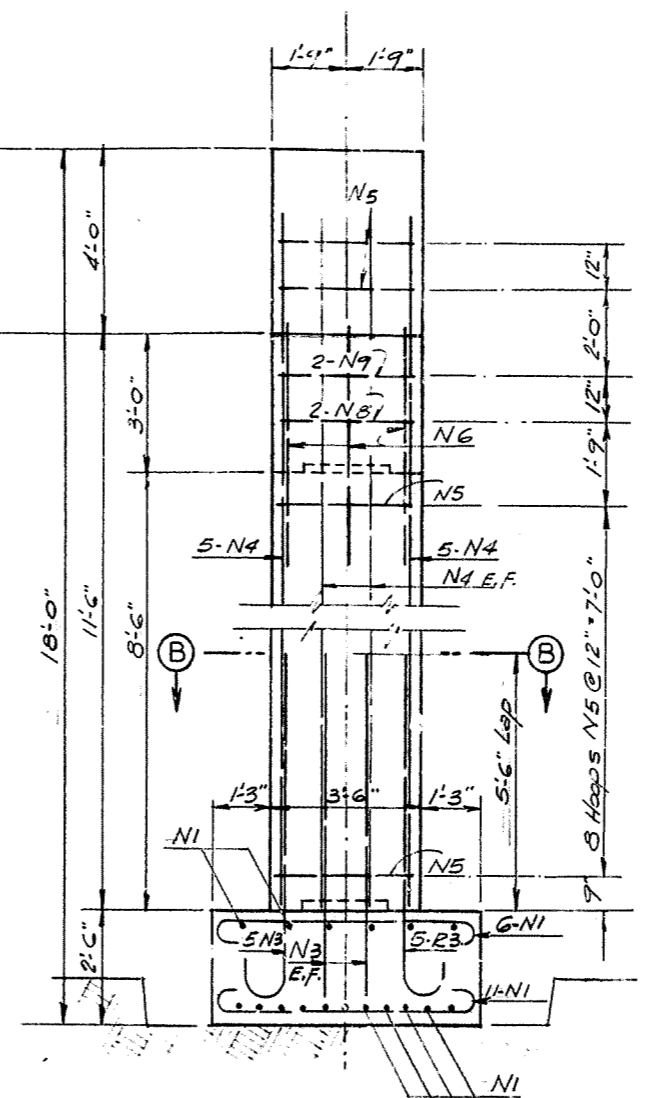
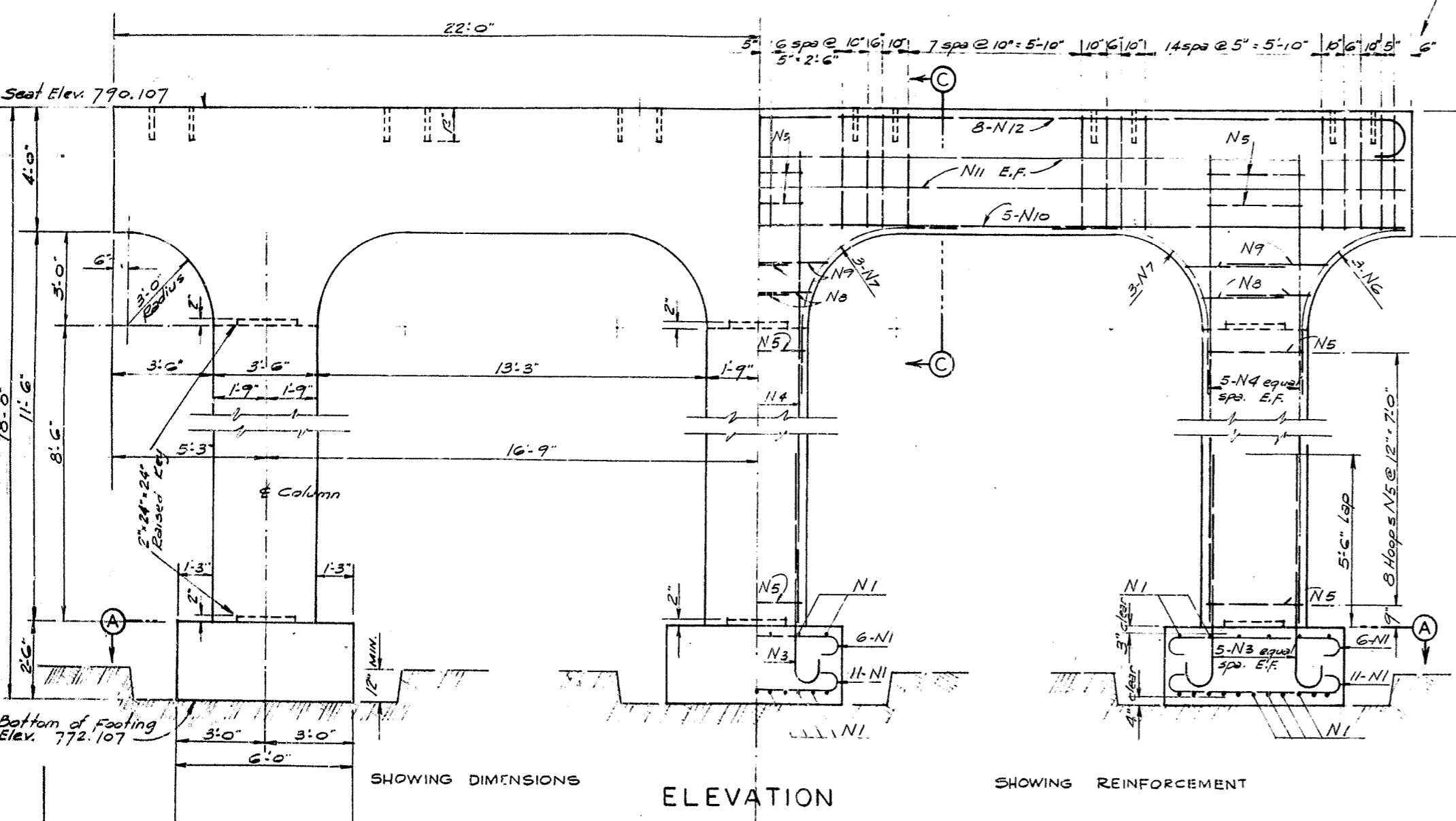
NO.	DATE	BY	CHKD.	APP'D.
7				



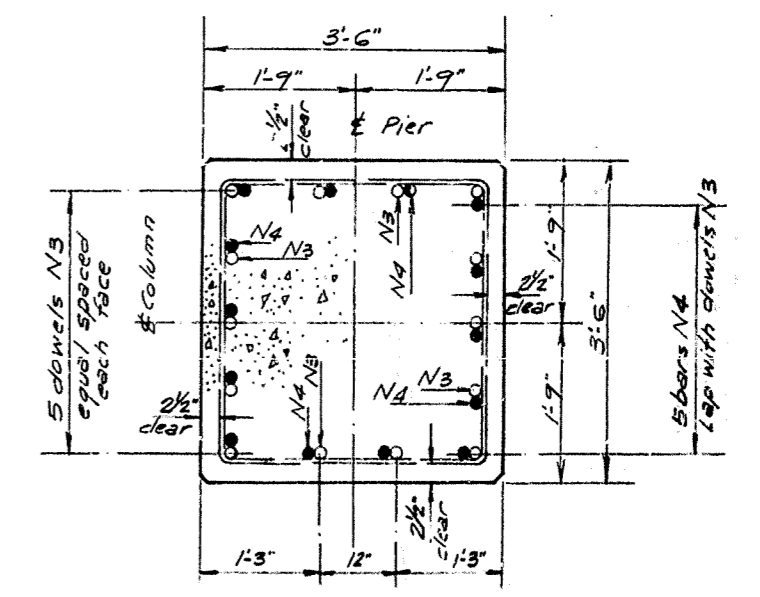
NOTE - Space Cap Reinforcement exact as shown to avoid drilled holes for anchor dowels



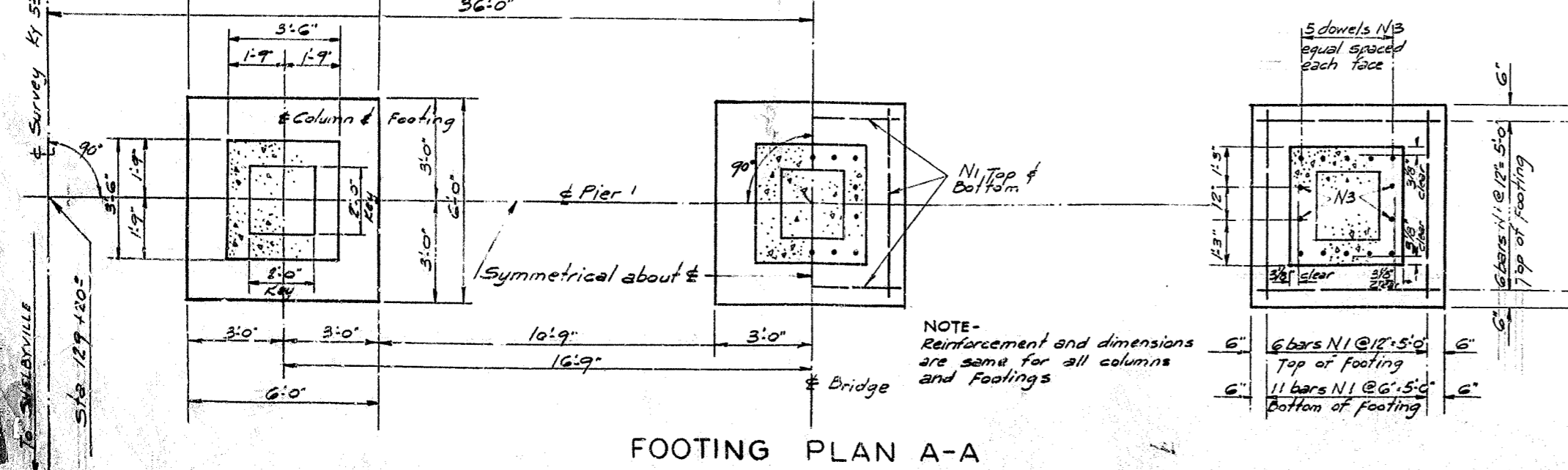
SECTION C-C



END ELEVATION



SECTION B-B



FOOTING PLAN A-A

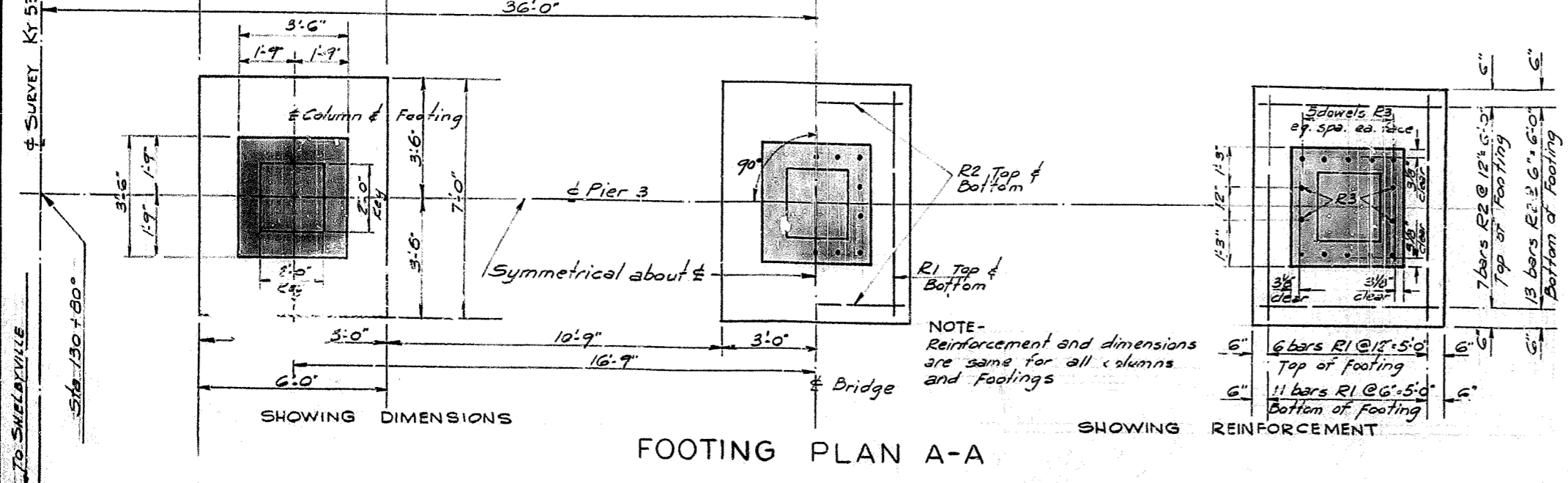
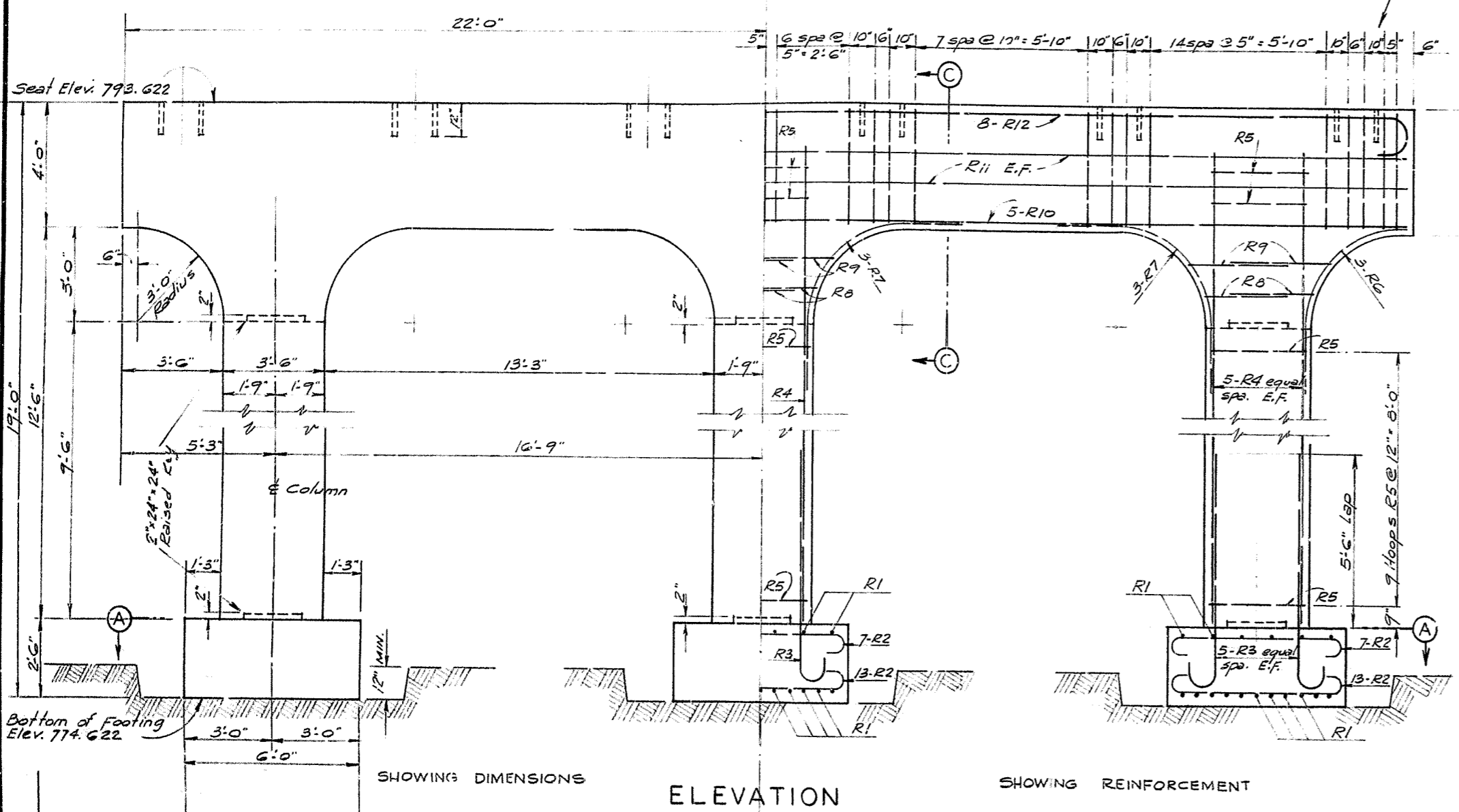
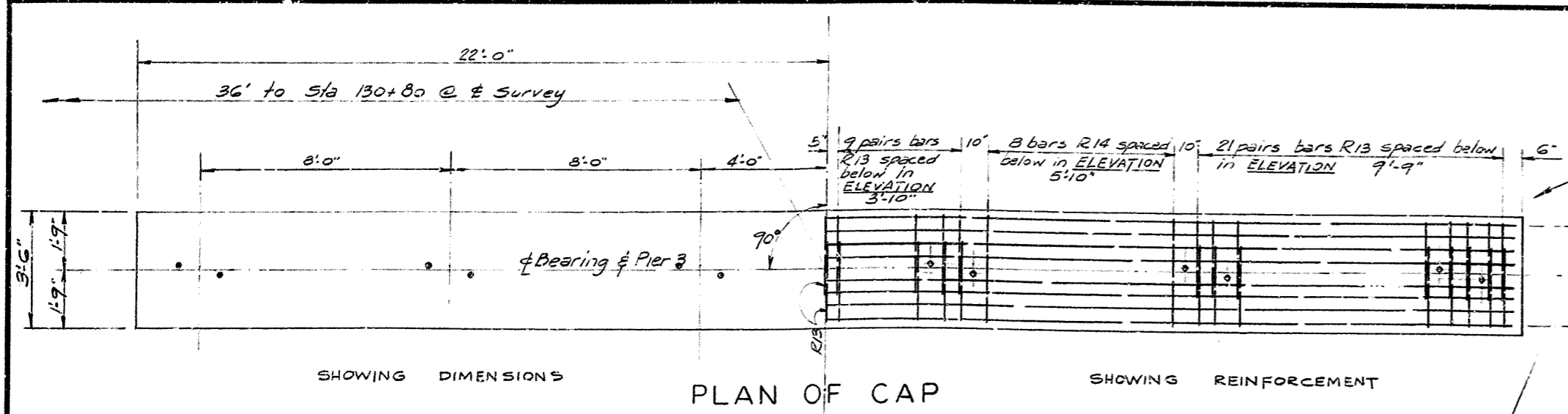
ESTIMATE OF QUANTITIES
 CONCRETE, CLASS "A" 50.0 CU. YDS.
 REINFORCEMENT 11,683 LBS.

DETAILS OF PIER 1
 WORK THIS SHEET WITH SHEET 8

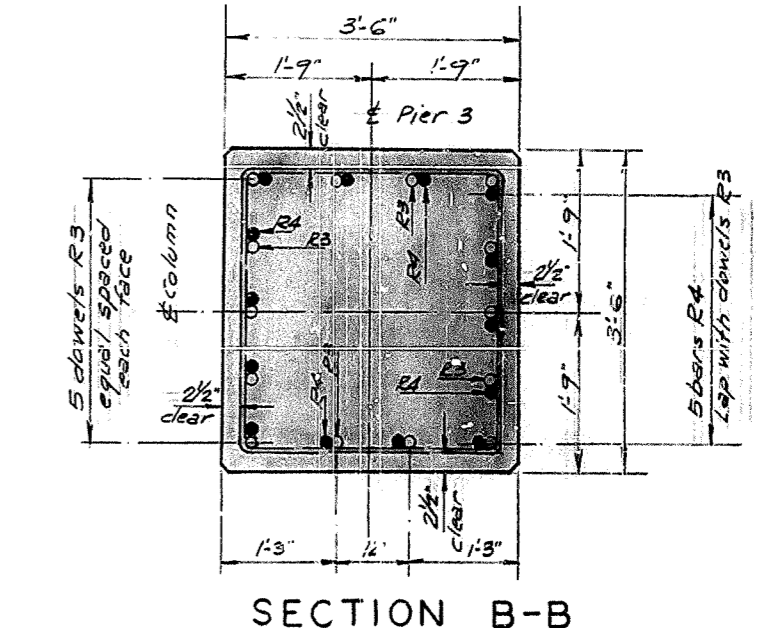
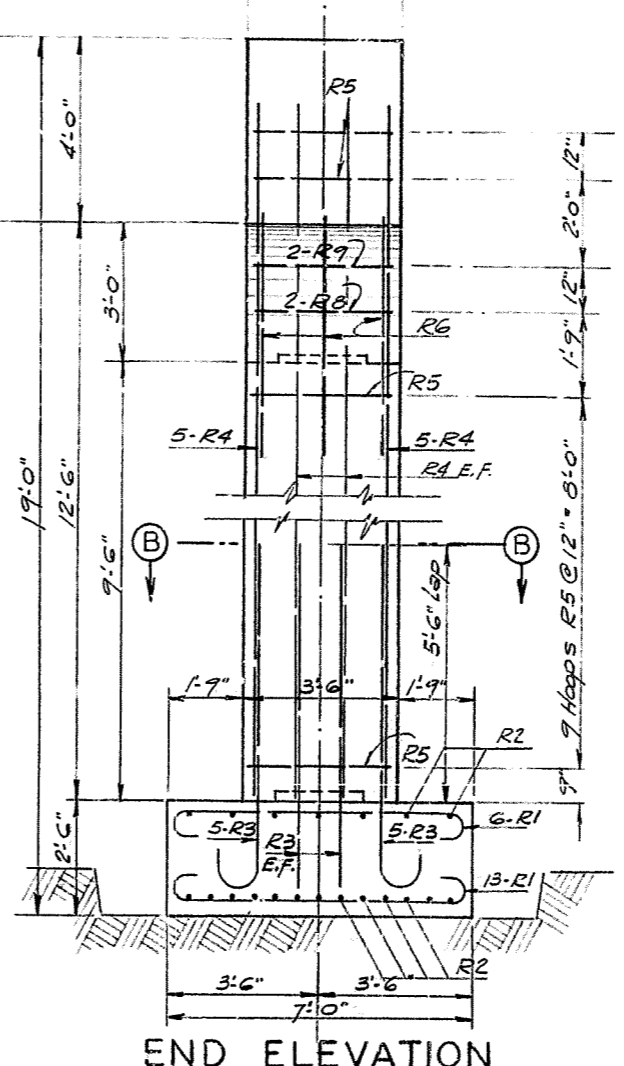
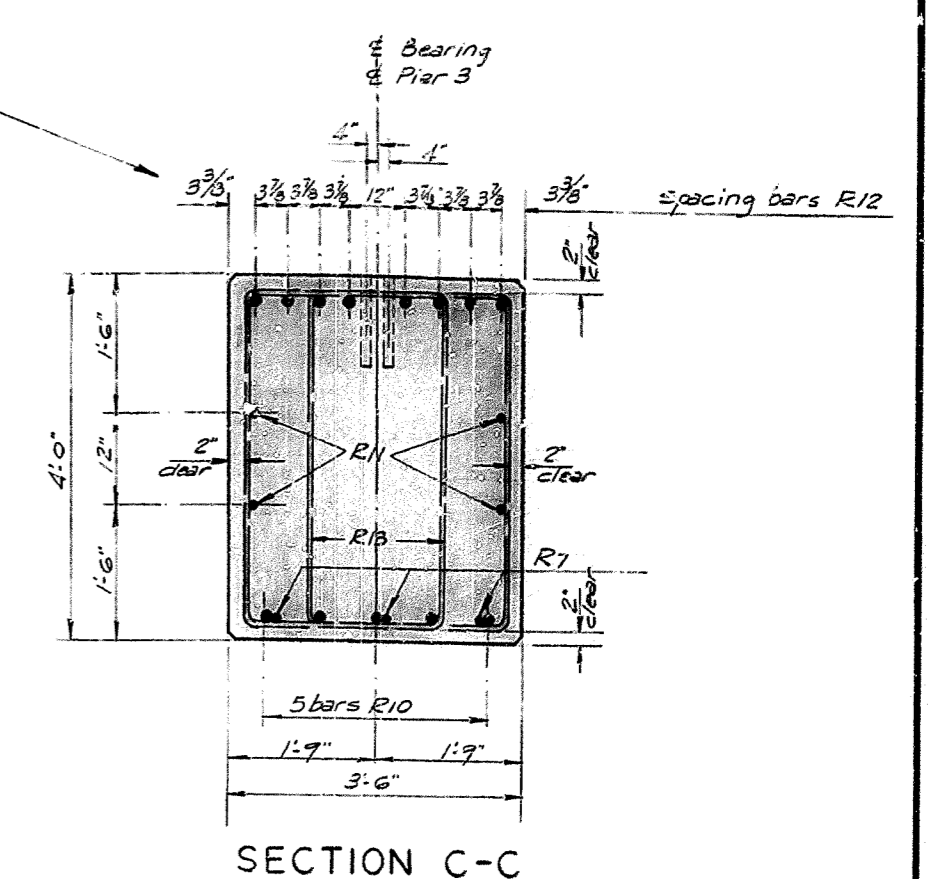
KY. 53 OVER INTERSTATE SHEET 4

COMMONWEALTH OF KENTUCKY
 DEPARTMENT OF HIGHWAYS
 FRANKFORT
 COUNTY OF
SHELBY
 LOUISVILLE-LEXINGTON-CATLETTSBURG

150+00 KY 53 # ROAD
 STATION 1400+67.71 INTERSTATE PROJECT NO.
 BRIDGE NUMBER 13756



NOTE - Space Cap reinforcement exact to avoid drilled holes for anchor dowels



ESTIMATE OF QUANTITIES
 CONCRETE, CLASS "A" 53.0 CU. YDS.
 REINFORCEMENT 12,079 LBS.

DETAILS OF PIER 3
 WORK THIS SHEET WITH SHEET 8

KY. 53 OVER INTERSTATE SHEET 6

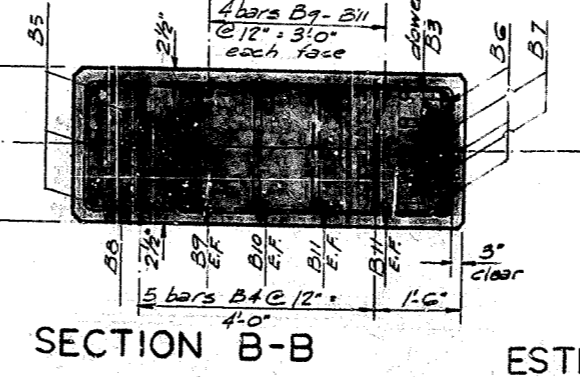
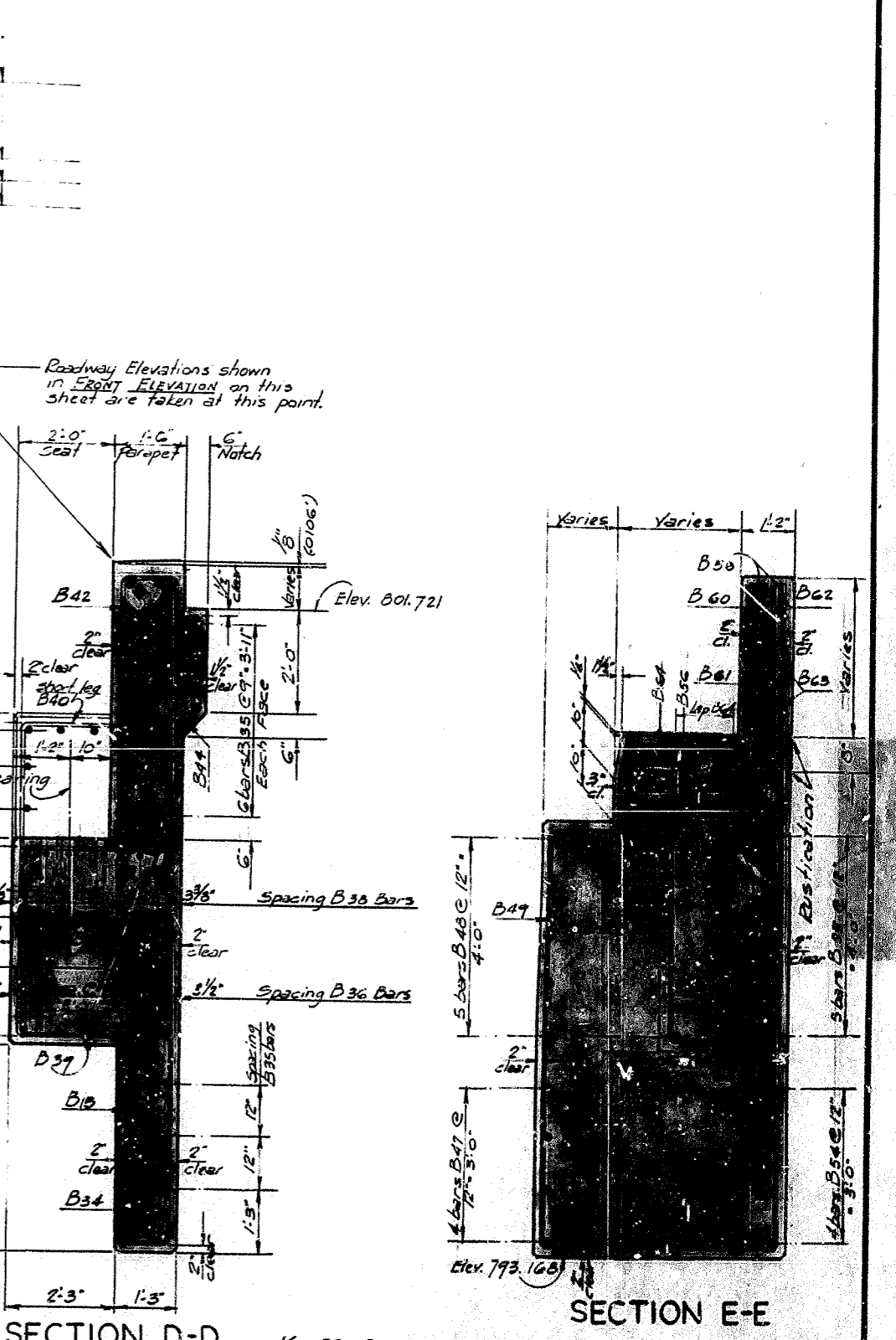
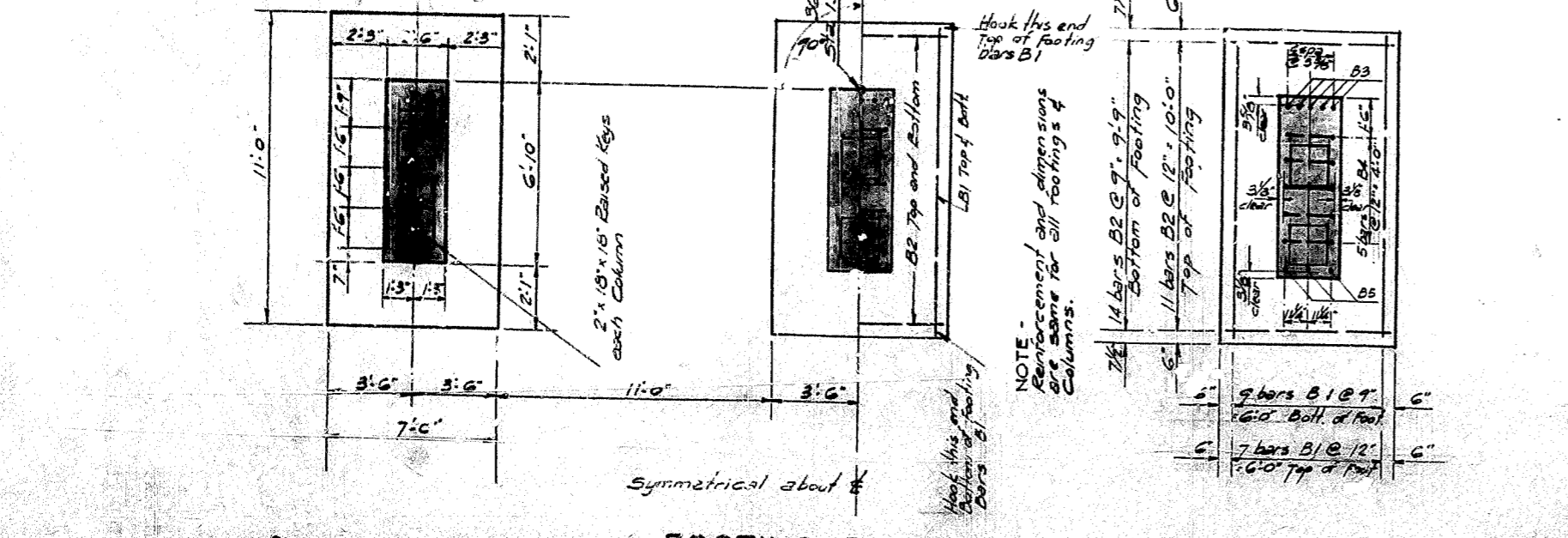
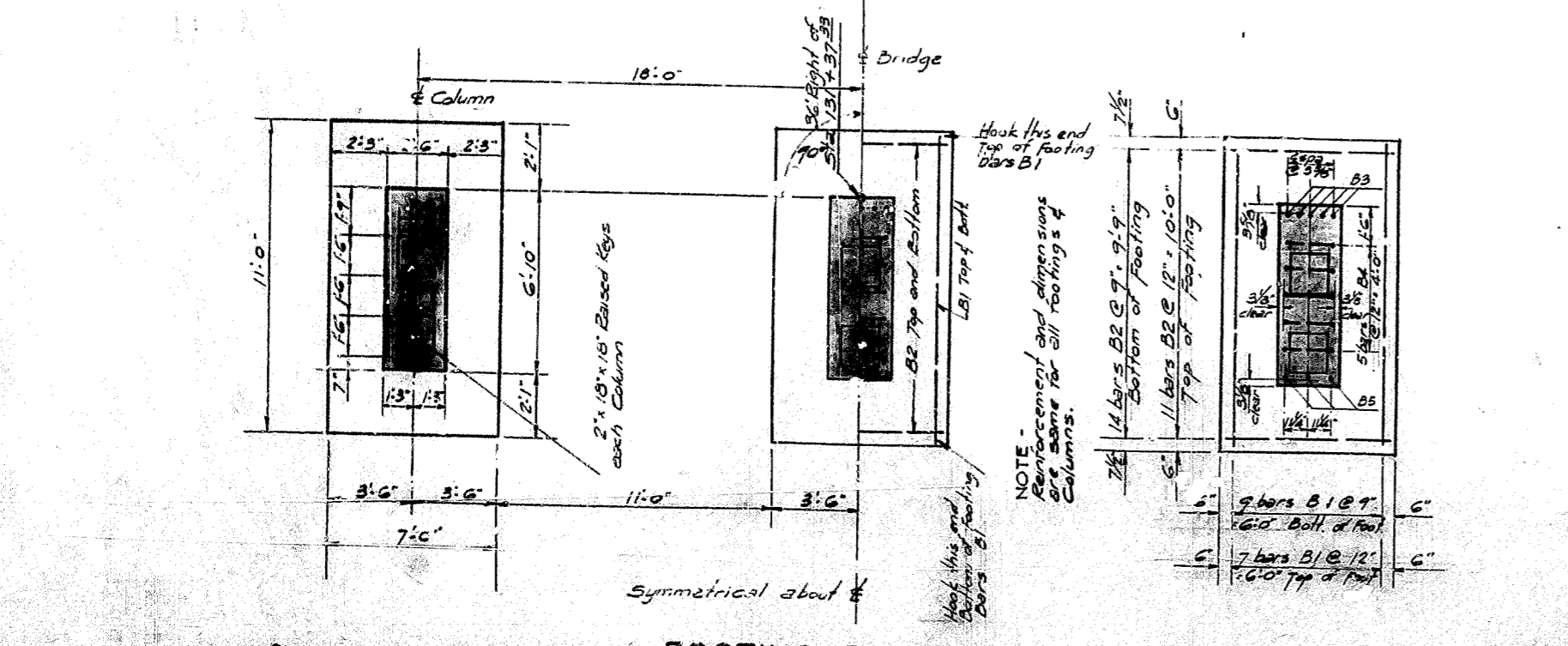
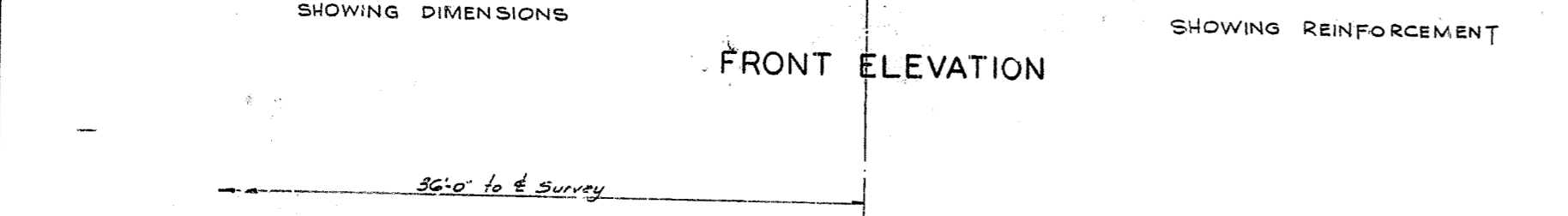
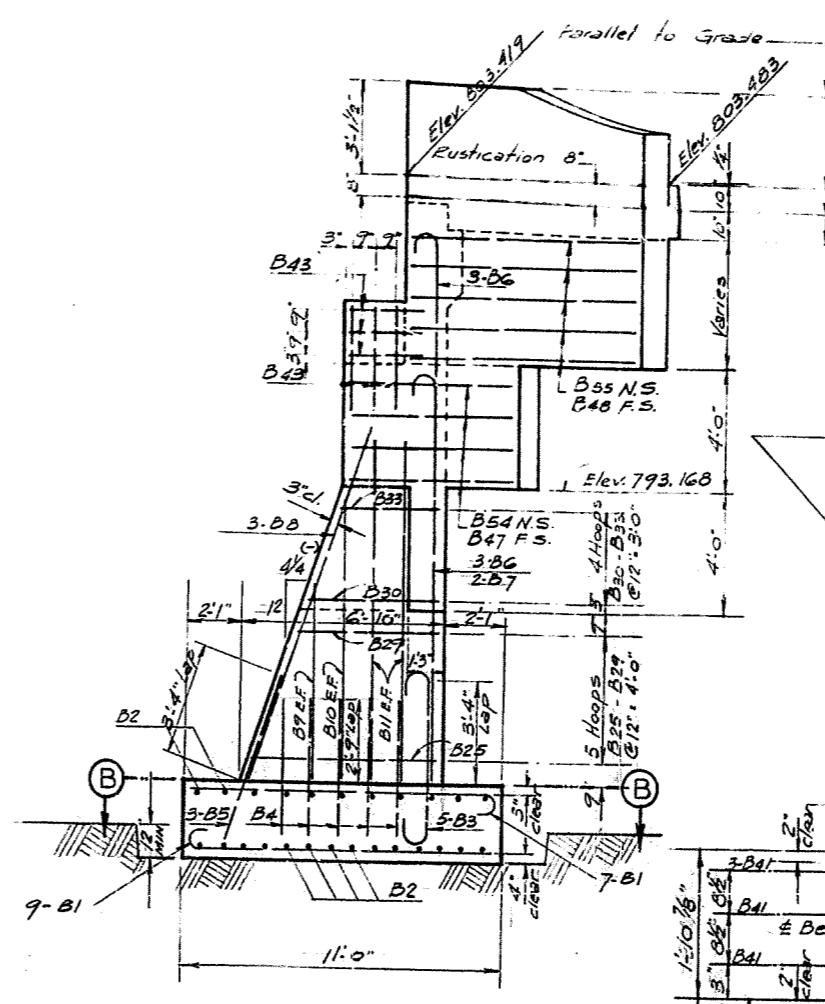
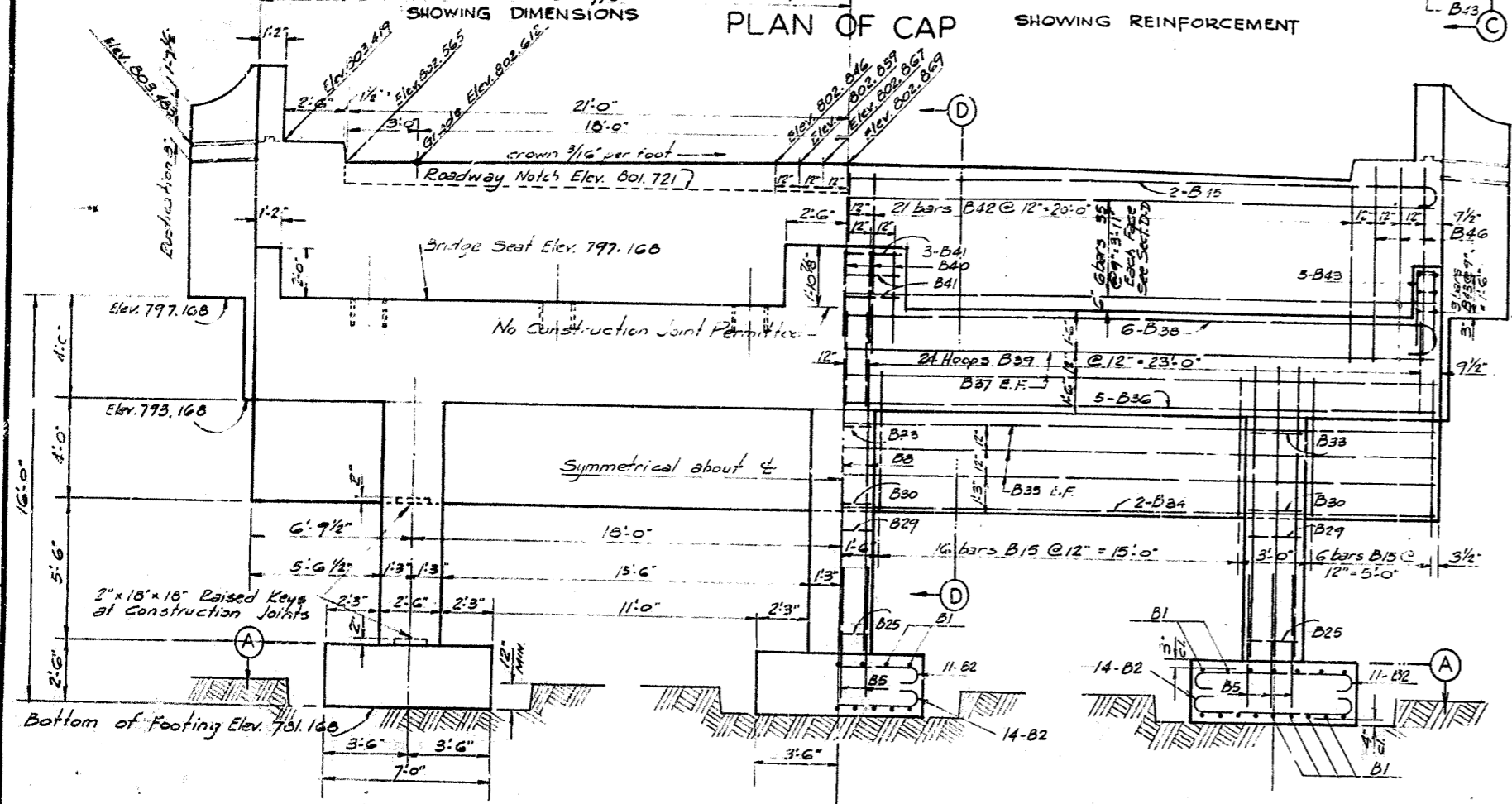
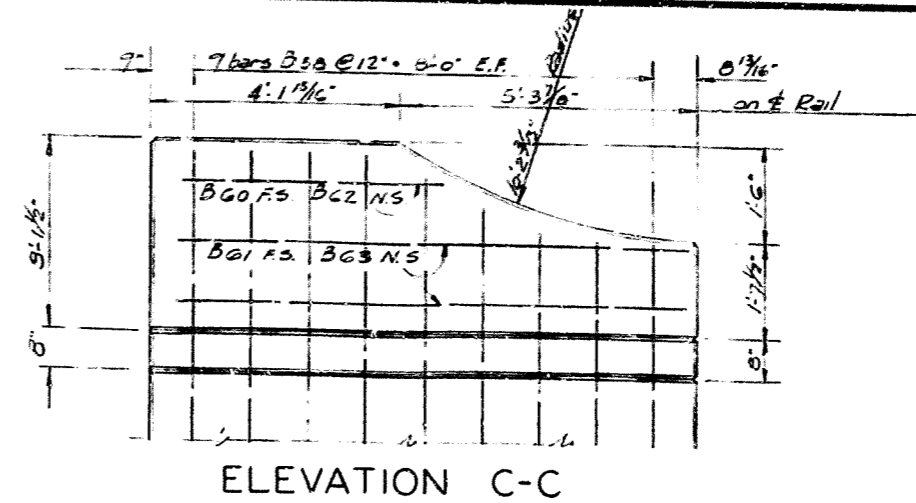
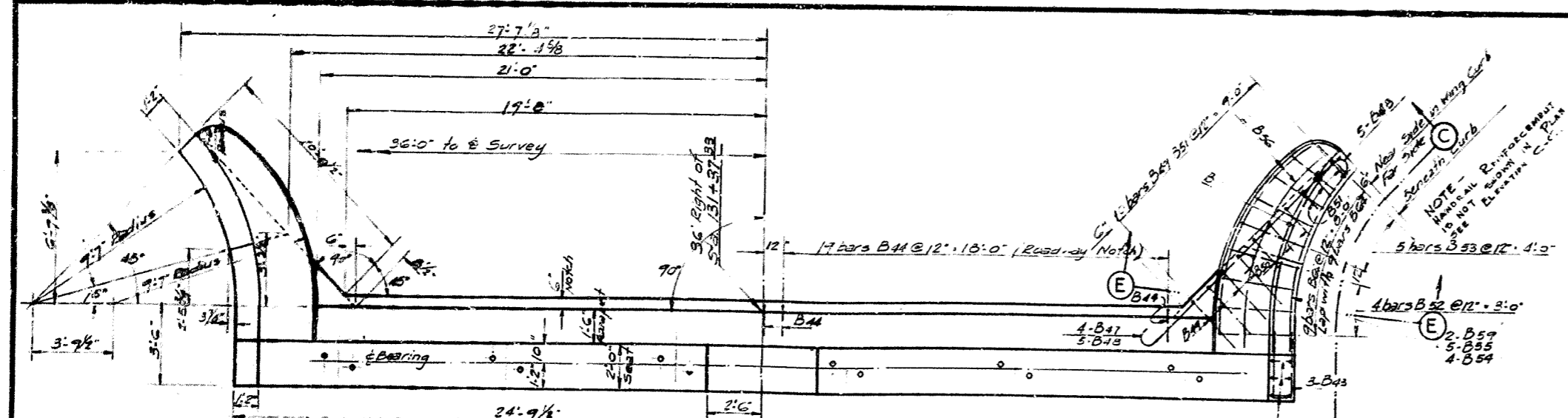
COMMONWEALTH OF KENTUCKY
 DEPARTMENT OF HIGHWAYS
 FRANKFORT
 COUNTY OF
SHELBY
 LOUISVILLE-LEXINGTON-CATLETTSBURG ROAD

STATION 130100 KY. 53 + 5
 BRIDGE NUMBER 1400 + 67.71 INTERSTATE PROJECT NO.

DRAWING NO. 13756 INDEX

DATE DATE DATE
 REVISIONS
 CHECKED BY: 10-5-53
 CHECKED BY: 10-5-53
 TO: SHELBYVILLE

NO.	DATE	BY	CHKD.	APP.	REV.
7	KY				



ESTIMATE OF QUANTITIES
 CONCRETE, CLASS "A" 102.8 Cu. Yds
 REINFORCEMENT 12,327 Lbs.

DETAILS OF ABUTMENT 2
 WORK THIS SHEET WITH SHEET 8

KY. 53 OVERPASS SHEET 7

COMMONWEALTH OF KENTUCKY
 DEPARTMENT OF HIGHWAYS
 FRANKFORT
 COUNTY OF
SHELBY
 LOUISVILLE-LEXINGTON-CATLETTSBURG

130+00 KY. 53 = ROAD
 STATION 140+167.91 INTERSTATE PROJECT NO.

BRIDGE NUMBER 13756

DATE: 10-25-58
 BY: G.A. DODSON
 CHECKED BY: J.L. BROWN
 DATE: 11-1-58

BILL OF REINFORCEMENT

MARK	TYPE	NO.	SIZE	LENGTH	LOCATION	a	b	c	d	e	f	g	h	j
ABUTMENT NO. 1														
A1	13	60	#6	15'6"	TOP AND BOTTOM OF FOOTINGS	14'6"	1'0"	0'6"						
A2	1	132	#8	8'3"		5'3"	1'0"	0'6"	6'9"					
A3	1	15	#8	9'0"	BACK FACE OF COLUMN DOWELS	6'0"	1'6"	0'10"	6'10"					
A4	34	24	#5	11'3"	COLUMN SIDES, DOWELS	1'11 1/2"	4'9"	4'9"						
A5	Str	9	#6	5'4"	FRONT FACE OF COLUMNS									
A6	13	9	#8	28'11"	BACK FACE OF COLUMNS	26'7"	1'6"	0'10"						
A7	"	6	#8	23'3"	"	21'9"	1'6"	0'10"						
A8	Str	9	#6	21'3"	FRONT FACE OF COLUMNS									
A9	"	6	#5	6'7"	COLUMN SIDES									
A10	"	6	"	9'6"	"									
A11	"	6	"	12'5"	"									
A12	"	6	"	15'3"	"									
A13	"	6	"	18'1"	"									
A14	"	12	"	19'10"	"									
A15	34	44	#5	11'1"	VERTICAL IN APRON	0'11"	5'2"	5'2"						
A16	23	3	"	21'4"	COLUMN HOOPS	9'22"	2'1"	0'6"						
A17	"	3	"	20'7"	"	8'10 1/2"	2'1"	0'6"						
A18	"	3	"	19'11"	"	8'6 1/2"	2'1"	0'6"						
A19	"	3	"	19'2"	"	8'2"	2'1"	0'6"						
A20	"	3	"	18'6"	"	7'10"	2'1"	0'6"						
A21	"	3	"	17'10"	"	7'5 1/2"	2'1"	0'6"						
A22	"	3	"	17'1"	"	7'1 1/2"	2'1"	0'6"						
A23	"	3	"	16'5"	"	6'9 1/2"	2'1"	0'6"						
A24	"	3	"	15'8"	"	6'5"	2'1"	0'6"						
A25	"	3	"	15'0"	"	6'0 1/2"	2'1"	0'6"						
A26	"	3	"	14'3"	"	5'8 1/2"	2'1"	0'6"						
A27	"	3	"	13'7"	"	5'4 1/2"	2'1"	0'6"						
A28	"	3	"	12'10"	"	5'0"	2'1"	0'6"						
A29	"	3	"	12'2"	"	4'8"	2'1"	0'6"						
A30	"	3	"	11'6"	"	4'3 1/2"	2'1"	0'6"						
A31	"	3	"	10'9"	"	3'11 1/2"	2'1"	0'6"						
A32	"	3	"	10'1"	"	3'7 1/2"	2'1"	0'6"						
A33	"	3	"	9'4"	"	3'3"	2'1"	0'6"						
A34	Str	2	#8	49'4"	BOTTOM OF APRON									
A35	"	18	#5	49'4"	APRON AND PARAPETS HORIZONTAL									
A36	"	5	#10	49'4"	BOTTOM OF CAP									
A37	"	4	#6	49'4"	CAP SIDES									
A38	1	6	#11	52'2"	TOP OF CAP	48'2"	2'0"	1'1 1/2"						
A39	24	49	#5	14'5"	CAP HOOPS	3'8"	3'2"	0'6"						
A40	6	5	"	6'2"	KEY	3'1"	3'2"							
A41	Str	5	"	4'9"	"									
A42	34	43	#6	16'1"	PARAPET VERTICAL	1'2"	7'7"	7'7"						
A43	"	12	#5	6'11"	CAP STUB WALLS	0'9 1/2"	3'2"	3'2"						
A44	39	39	"	4'11"	ROADWAY NOTCH	1'9 1/2"	1'6"	1'2 1/2"	1'2 1/2"	1'1 1/2"				
A45	1	2	#8	5'1'6"	TOP OF PARAPET	48'6"	1'6"	0'10"	49'4"					
A46	34	6	#6	17'9"	PARAPET UNDER SIDEWALK VERTICAL	1'2"	8'5"	8'5"						
A47	5	8	#8	8'5"	HAUNCH UNDER WINGS	5'5"	1'6"	0'10"						
A48	5	10	"	14'5"	"	11'5"	1'6"	0'10"						
A49	34	8	#5	14'0"	"	8'2"	3'0"	3'0"						
A50	6	6	#5	6'11"	"	5'6"	1'6"							
A51	"	6	"	6'5"	"	5'6"	0'10"							
A52	"	8	"	11'11"	CURVED WING VERTICAL	9'6"	2'6"							
A53	"	10	"	5'5"	"	5'6"	0'12"							
A54	10	8	"	5'8"	CURVED WING HORIZONTAL	3'3"	2'5"	9'9 1/2"						
A55	"	10	"	8'10"	"	1'3"	7'7"	9'9 1/2"						
A56	"	8	"	9'11"	WING CURB	1'3"	8'8"	9'2 1/2"						
A57	"	2	"	7'4"	TOP OF CURB	1'3"	8'1"	10'5 1/2"						

MARK	TYPE	NO.	SIZE	LENGTH	LOCATION	a	b	c	d	e	f	g	h	j
ABUTMENT NO. 1 (CONT.)														
A58	Str	36	#6	4'7"	HANDRAIL VERTICAL									
A59	10	4	#8	8'10"	WING CURB	1'3"	7'7"	9'9 1/2"						
A60	10	2	#4	3'10"	HANDRAIL HORIZONTAL	1'3"	2'7"	10'5 1/2"						
A61	"	4	"	9'4"	"	1'3"	8'1"	10'5 1/2"						
A62	"	2	"	3'8"	"	1'3"	2'5"	9'9 1/2"						
A63	"	4	"	8'10"	"	1'3"	7'7"	9'9 1/2"						
A64	34	36	#5	5'6"	WING CURB HOOPS	1'3"	2'2"	2'2"						
PIER NO. 1														
N1	1	102	#6	7'3"	FOOTING	5'3"	1'0"	0'6"	5'9"					
N2					NOT USED									
N3	13	42	#10	8'9"	FOOTING TO COLUMN DOWELS	6'11"	1'10"	1'0 1/2"						
N4	Str	42	"	14'0"	COLUMN									
N5	24	30	#5	13'1"	COLUMN HOOPS	3'1"	3'1"	0'6"						
N6	50	6	#8	7'6"	COLUMN TO CAP FILLET	3'3 1/2"	2'0"	5'2 1/2"	0'3 1/2"					
N7	"	12	"	9'2"	"	3'3 1/2"	2'0"	5'2 1/2"	2'0"					
N8	34	6	#5	8'7"	"	3'1"	2'10"	2'10"						
N9	"	6	"	9'9"	"	3'1"	3'5"	3'5"						
N10	Str	5	#11	43'8"	BOTTOM OF CAP									
N11	"	4	#8	43'8"	CAP SIDES									
N12	1	8	#11	46'7"	TOP OF CAP	42'7"	2'0"	1'1 1/2"	43'8 1/2"					
N13	24	122	#5	13'2"	CAP DOUBLE STIRRUPS	3'8"	3'2"	0'6"						
N14	"	16	"	14'5"	CAP SINGLE STIRRUPS	3'8"	3'2"	0'6"						
PIER NO. 2														
P1	1	102	#6	7'3"	FOOTING	5'3"	1'0"	0'6"	5'9"					
P2					NOT USED									
P3	13	42	#10	8'9"	FOOTING TO COLUMN DOWELS	6'11"	1'10"	1'0 1/2"						
P4	Str	42	"	13'0"	COLUMN									
P5	24	27	#5	13'1"	COLUMN HOOPS	3'1"	3'1"	0'6"						
P6	50	6	#8	7'6"	COLUMN TO CAP FILLET	3'3 1/2"	2'0"	5'2 1/2"	0'3 1/2"					
P7	"	12	"	9'2"	"	3'3 1/2"	2'0"	5'2 1/2"	2'0"					
P8	34	6	#5	8'7"	"	3'1"	2'10"	2'10"						
P9	"	6	"	9'9"	"	3'1"	3'5"	3'5"						
P10	Str	5	#11	43'8"	BOTTOM OF CAP									
P11	"	4	#8	43'8"	CAP SIDES									
P12	1	8	#11	46'7"	TOP OF CAP	42'7"	2'0"	1'1 1/2"	43'8 1/2"					
P13	24	122	#5	13'2"	CAP DOUBLE STIRRUPS	3'8"	3'2"	0'6"						
P14	"	16	"	14'5"	CAP SINGLE STIRRUPS	3'8"	3'2"	0'6"						
PIER NO. 3														
R1	1	51	#6	8'3"	FOOTING	6'3"	1'0"	0'6"	6'9"					
R2	"	60	"	7'3"	"	5'3"	1'0"	0'6"	5'9"					
R3	13	42	#10	8'9"	FOOTING TO COLUMN DOWELS	6'11"	1'10"	1'0 1/2"						
R4	Str	42	"	15'0"	COLUMN									
R5	24	33	#5	13'1"	COLUMN HOOPS	3'1"	3'1"	0'6"						
R6	50	6	#8	7'6"	COLUMN TO CAP FILLET	3'3 1/2"	2'0"	5'2 1/2"	0'3 1/2"					
R7	"	12	"	9'2"	"	3'3 1/2"	2'0"	5'2 1/2"	2'0"					
R8	34	6	#5	8'7"	"	3'1"	2'10"	2'10"						
R9	"	6	"	9'9"	"	3'1"	3'5"	3'5"						
R10	Str	5	#11	43'8"	BOTTOM OF CAP									
R11	"	4	#8	43'8"	CAP SIDES									
R12	1	8	#11	46'7"	TOP OF CAP	42'7"	2'0"	1'1 1/2"	43'8 1/2"					
R13	24	122	#5	13'2"	CAP DOUBLE STIRRUPS	3'8"	3'2"	0'6"						
R14	"	16	"	14'5"	CAP SINGLE STIRRUPS	3'8"	3'2"	0'6"						

MARK	TYPE	NO.	SIZE	LENGTH	LOCATION	a	b	c	d	e	f	g	h	j
------	------	-----	------	--------	----------	---	---	---	---	---	---	---	---	---

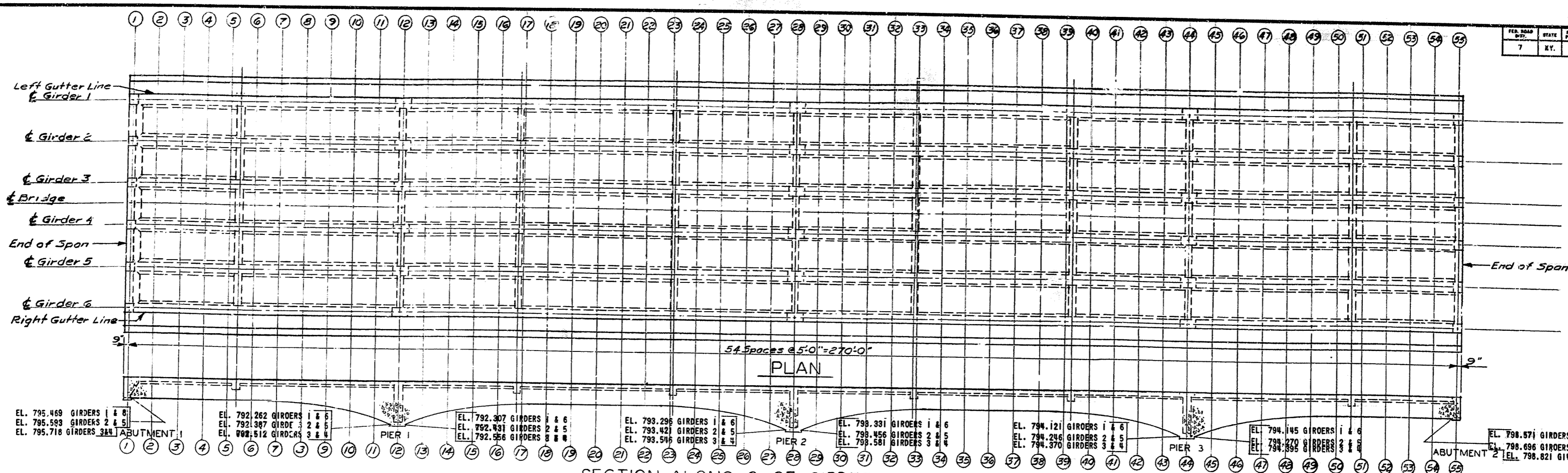
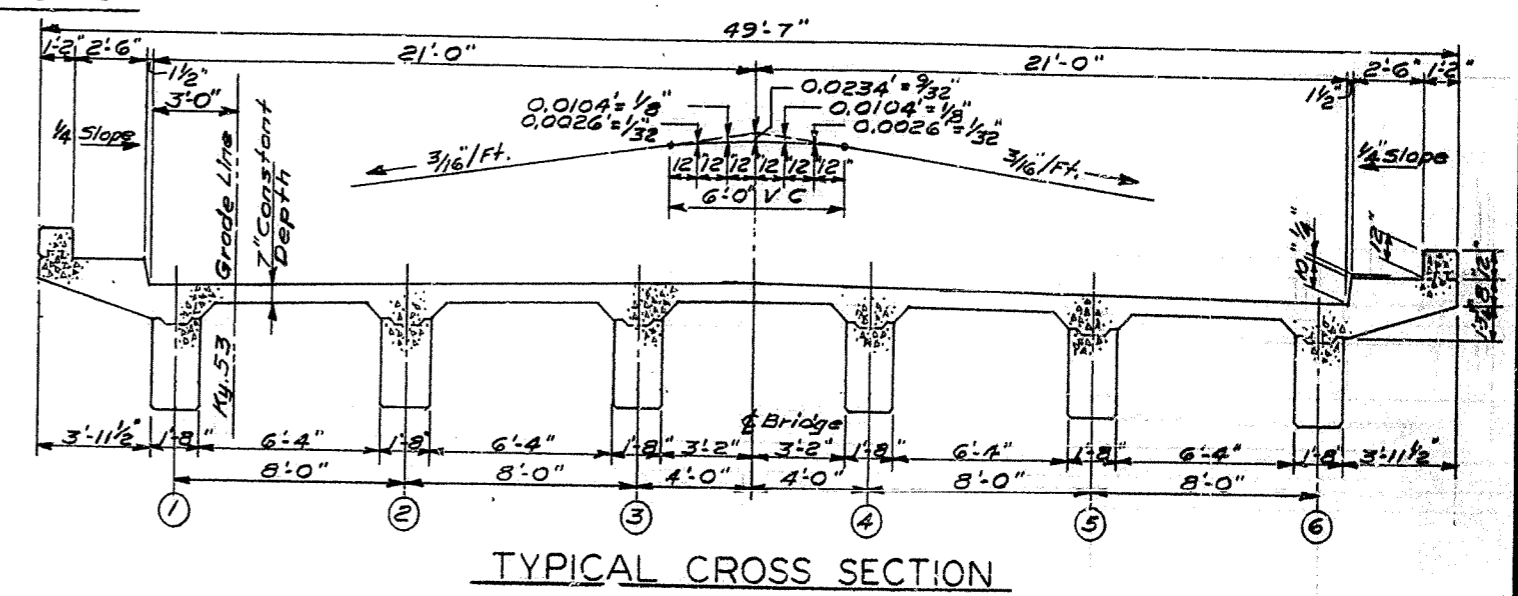


TABLE OF ELEVATIONS

SECTION	RIGHT OF STATION	LEFT & RIGHT GUTTER LINES	GIRDERS 1 & 6		GIRDERS 2 & 5		GIRDERS 3 & 4		BRIDGE	
			BOTTOM	TOP	BOTTOM	TOP	BOTTOM	TOP	BOTTOM	TOP
END OF SPAN	128+64.25	799.427	799.427	799.687	799.687	799.687	799.892	799.892	799.731	
1 - 1	128+65.00	799.439	799.439	799.579	799.579	799.579	799.704	799.704	799.743	
2 - 2	128+70.00	799.533	799.533	799.673	799.673	799.673	799.798	799.798	799.837	
3 - 3	128+75.00	799.627	799.627	799.767	799.767	799.767	799.892	799.892	799.931	
4 - 4	128+80.00	799.721	799.721	799.861	799.861	799.861	799.986	799.986	800.025	
5 - 5	128+85.00	799.815	799.815	799.955	799.955	799.955	800.080	800.080	800.119	
6 - 6	128+90.00	799.909	799.909	800.049	800.049	800.049	800.174	800.174	800.213	
7 - 7	128+95.00	799.928	799.928	800.068	800.068	800.068	800.193	800.193	800.232	
8 - 8	129+00.00	799.994	799.994	800.134	800.134	800.134	800.259	800.259	800.298	
9 - 9	129+05.00	800.058	800.058	800.198	800.198	800.198	800.323	800.323	800.362	
10 - 10	129+10.00	800.124	800.124	800.264	800.264	800.264	800.389	800.389	800.428	
11 - 11	129+15.00	800.190	800.190	800.330	800.330	800.330	800.455	800.455	800.494	
12 - 12	129+20.00	800.256	800.256	800.396	800.396	800.396	800.521	800.521	800.560	
13 - 13	129+25.00	800.322	800.322	800.462	800.462	800.462	800.587	800.587	800.626	
14 - 14	129+30.00	800.388	800.388	800.528	800.528	800.528	800.653	800.653	800.692	
15 - 15	129+35.00	800.454	800.454	800.594	800.594	800.594	800.719	800.719	800.758	
16 - 16	129+40.00	800.520	800.520	800.660	800.660	800.660	800.785	800.785	800.824	
17 - 17	129+45.00	800.586	800.586	800.726	800.726	800.726	800.851	800.851	800.890	
18 - 18	129+50.00	800.652	800.652	800.792	800.792	800.792	800.917	800.917	800.956	
19 - 19	129+55.00	800.718	800.718	800.858	800.858	800.858	800.983	800.983	801.022	
20 - 20	129+60.00	800.784	800.784	800.924	800.924	800.924	801.049	801.049	801.088	
21 - 21	129+65.00	800.850	800.850	800.990	800.990	800.990	801.115	801.115	801.154	
22 - 22	129+70.00	800.916	800.916	801.056	801.056	801.056	801.181	801.181	801.220	
23 - 23	129+75.00	800.982	800.982	801.122	801.122	801.122	801.247	801.247	801.286	
24 - 24	129+80.00	801.048	801.048	801.188	801.188	801.188	801.313	801.313	801.352	
25 - 25	129+85.00	801.114	801.114	801.254	801.254	801.254	801.379	801.379	801.418	
26 - 26	129+90.00	801.180	801.180	801.320	801.320	801.320	801.445	801.445	801.484	
27 - 27	129+95.00	801.246	801.246	801.386	801.386	801.386	801.511	801.511	801.550	
28 - 28	130+00.00	801.312	801.312	801.452	801.452	801.452	801.577	801.577	801.616	
29 - 29	130+05.00	801.378	801.378	801.518	801.518	801.518	801.643	801.643	801.682	
30 - 30	130+10.00	801.444	801.444	801.584	801.584	801.584	801.709	801.709	801.748	
31 - 31	130+15.00	801.510	801.510	801.650	801.650	801.650	801.775	801.775	801.814	
32 - 32	130+20.00	801.576	801.576	801.716	801.716	801.716	801.841	801.841	801.880	
33 - 33	130+25.00	801.642	801.642	801.782	801.782	801.782	801.907	801.907	801.946	
34 - 34	130+30.00	801.708	801.708	801.848	801.848	801.848	801.973	801.973	802.012	
35 - 35	130+35.00	801.774	801.774	801.914	801.914	801.914	802.039	802.039	802.078	
36 - 36	130+40.00	801.840	801.840	801.980	801.980	801.980	802.105	802.105	802.144	
37 - 37	130+45.00	801.906	801.906	802.046	802.046	802.046	802.171	802.171	802.210	
38 - 38	130+50.00	801.972	801.972	802.112	802.112	802.112	802.237	802.237	802.276	
39 - 39	130+55.00	802.038	802.038	802.178	802.178	802.178	802.303	802.303	802.342	
40 - 40	130+60.00	802.104	802.104	802.244	802.244	802.244	802.369	802.369	802.408	
41 - 41	130+65.00	802.170	802.170	802.310	802.310	802.310	802.435	802.435	802.474	
42 - 42	130+70.00	802.236	802.236	802.376	802.376	802.376	802.501	802.501	802.540	
43 - 43	130+75.00	802.302	802.302	802.442	802.442	802.442	802.567	802.567	802.606	
44 - 44	130+80.00	802.368	802.368	802.508	802.508	802.508	802.633	802.633	802.672	
45 - 45	130+85.00	802.434	802.434	802.574	802.574	802.574	802.699	802.699	802.738	
46 - 46	130+90.00	802.500	802.500	802.640	802.640	802.640	802.765	802.765	802.804	
47 - 47	130+95.00	802.566	802.566	802.706	802.706	802.706	802.831	802.831	802.870	
48 - 48	131+00.00	802.632	802.632	802.772	802.772	802.772	802.897	802.897	802.936	
49 - 49	131+05.00	802.698	802.698	802.838	802.838	802.838	802.963	802.963	803.002	
50 - 50	131+10.00	802.764	802.764	802.904	802.904	802.904	803.029	803.029	803.068	
51 - 51	131+15.00	802.830	802.830	803.070	803.070	803.070	803.195	803.195	803.234	
52 - 52	131+20.00	802.896	802.896	803.136	803.136	803.136	803.261	803.261	803.300	
53 - 53	131+25.00	802.962	802.962	803.202	803.202	803.202	803.327	803.327	803.366	
54 - 54	131+30.00	803.028	803.028	803.268	803.268	803.268	803.393	803.393	803.432	
55 - 55	131+35.00	803.094	803.094	803.334	803.334	803.334	803.459	803.459	803.498	
END OF SPAN	131+36.75	803.160	803.160	803.400	803.400	803.400	803.525	803.525	803.564	

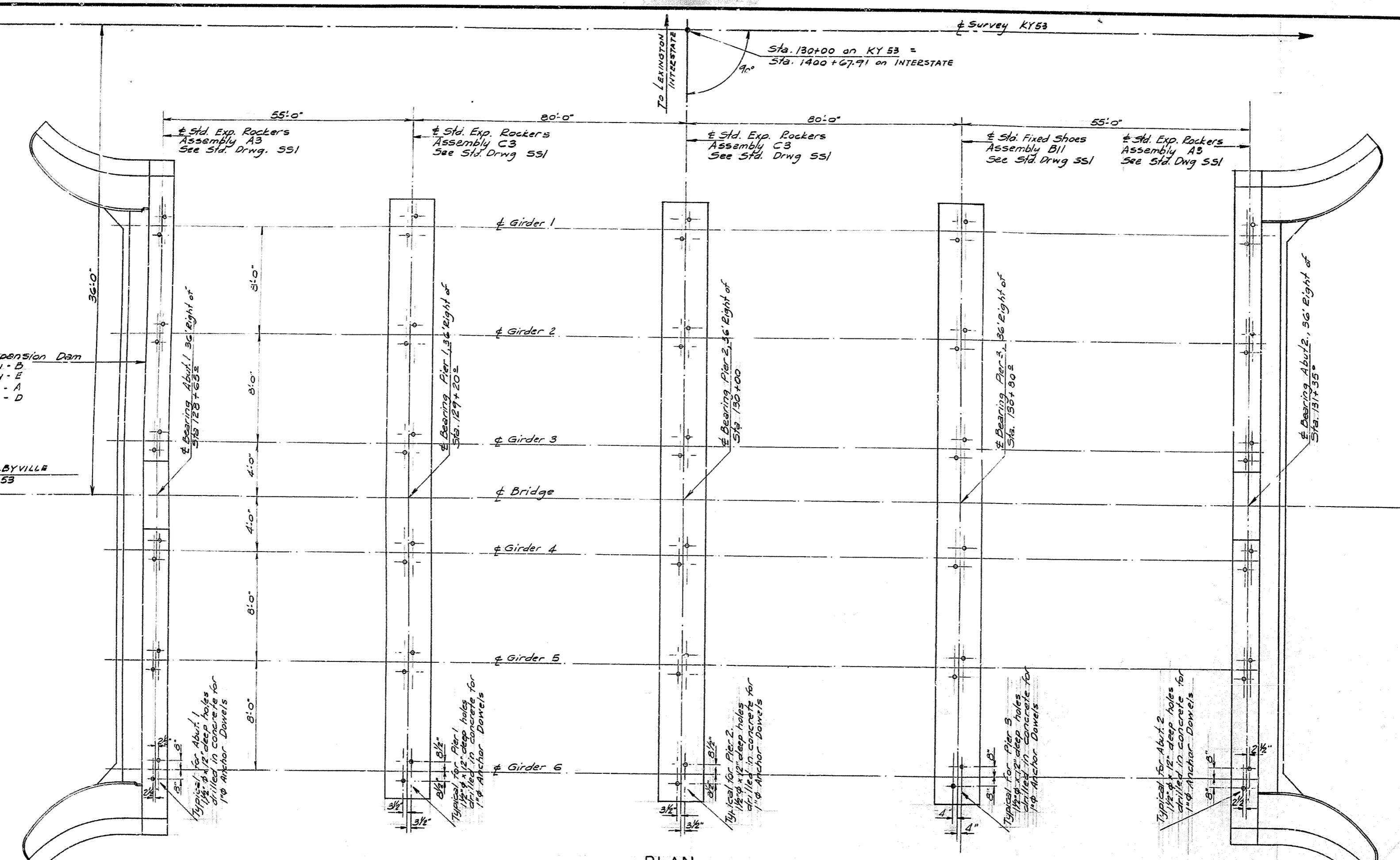
Note: Elevations shown on this sheet include construction camber and shall be maintained with falsework in place.



ELFVATIONS

KY 53 OVER INTERSTATE SHEET 10
COMMONWEALTH OF KENTUCKY
 DEPARTMENT OF HIGHWAYS
 FRANKFORT
 COUNTY OF
SHELBY
 LOUISVILLE - LEXINGTON - CATLETTSBURG
 130+00 KY 53 ROAD
 STATION 1400 + 67.91 INTERSTATE PROJECT NO.
 BRIDGE NUMBER 13756 INDEX

FED. ROAD DIST.	STATE	FED. AID PROJ. NO.	FISCAL YEAR	DRAWING NO.	SHEET NO.
7	KY.				



Standard Expansion Dam
 1- Assembly - D
 2- Assembly - E
 1- Assembly - A
 2- Assembly - D

PLAN
 (SUPERSTRUCTURE REMOVED)

NOTE - 1/2" φ x 12" deep holes for Anchor Dowels shall be drilled by the Contractor who shall be responsible for keeping holes dry in freezing weather. See additional notes on Standard Drawing 351.

DATE	BY	DATE	BY

ANCHOR BOLT PLAN

KY 53 OVER INTERSTATE SURT 11

COMMONWEALTH OF KENTUCKY
 DEPARTMENT OF HIGHWAYS
 FRANKFORT
 COUNTY OF
SHELBY
 LOUISVILLE-LEXINGTON-CATLETTSBURG

130+00 KY 53 - ROAD
 STATION 1400+67.91 INTERSTATE PROJECT NO.
 BRIDGE NUMBER DRAWING NO. 13756